

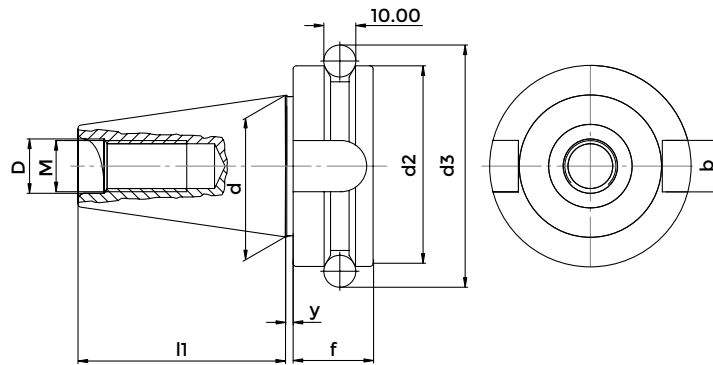


# **BT CHUCKS**

JIS-B 6339



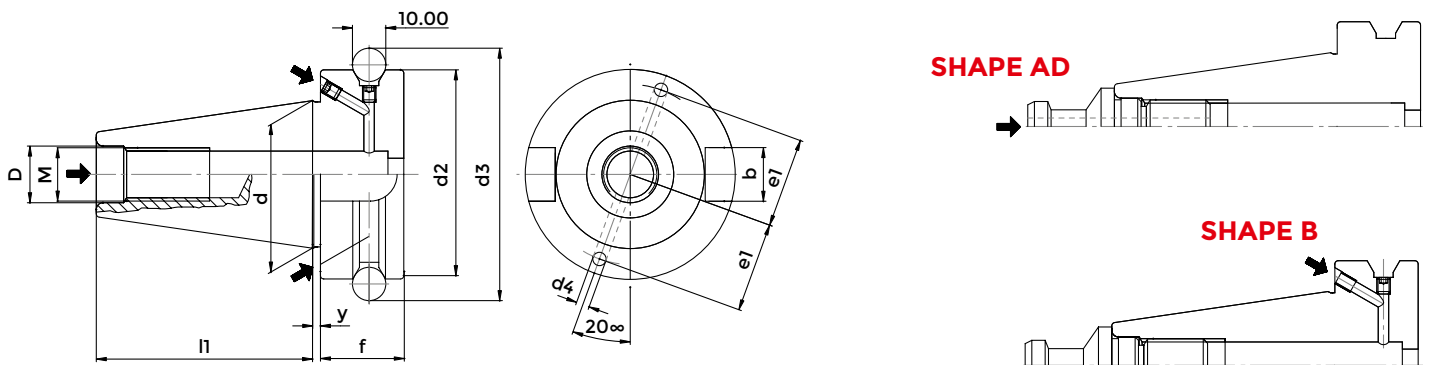
## TAPER SHANKS DATA SHEET



### JIS-B 6339 - MAS 403/BT SHAPE A

ISO	d	l1	D	M	y	d2	f	d3	b
30	31,75	48,4	12,5	M12	2	46	20	56,144	16,1
40	44,45	65,4	17	M16	2	63	25	75,68	16,1
50	69,85	101,8	25	M24	3	100	35	110,02	25,7

## TAPER SHANKS DATA SHEET



### JIS-B 6339 MAS 403/BT SHAPE AD/B

ISO	d	l1	D	M	y	d2	f	d3	d4	e1	b
40	44,45	65,4	17	M16	2	63	25	75,68	4	27	16,1
50	69,85	101,8	25	M24	3	100	35	110,02	5	42	25,7

For coolant through V-flange bores (B) or center of toolholders (AD). For central coolant, the V-flange channels are closed by socket screws.

## TECHNICAL FEATURES KINTEK DIN TOOLHOLDERS

### JIS-B 6339 MAS 403/BT SHAPE A-AD/B

All Kintek Toolholders are manufactured according to DIN norm.

#### COLLET CHUCK RUNOUT ACCURACY

The norm DIN6391 permits a runout error between external cone and internal cone / collet seat of 0.016.

Our production has a runout accuracy which is guaranteed to be within 0,003 / 0,010 m at the tool seat.

#### SHELL END MILL ADAPTOR RUNOUT ACCURACY

Our shell end mill adaptors meet the requirements of the norm DIN6358, which prescribes for diameters 16-22-27-32-40 a runout accuracy of: 0, 01 for SK 30/40 0,015 for SK 50.

#### WELDON END MILL HOLDER RUNOUT ACCURACY

According to the norm DIN6359-1 Weldon end mill holders have to meet the following requirements:

**BORE:** H5 tolerance

**RUNOUT ACCURACY:** <0.01 (per ISO 40)

Our end mill adaptors ensure the prescribed holes' tolerance and have a runout accuracy which is normally 0.005.

#### BALANCING

The major part of toolholders of this category can run up to 8000 rpm grade G 6,3 or 12000 rpm. Besides the descriptive and dimensional table of products, you can find the additive balancing grade.

#### CONSTRUCTIVE FEATURES

- Manufactured with Casehardening Steel.
- Casehardened with depth 0,6 - 0,8 mm
- Hardened-Tempered
- Hardness HRC 58+-2, Strength 800-1000 N/mm<sup>2</sup>
- Black oxidized
- Internal and external grinding finished.

#### NEW HIGH-SPEED BALANCING TOOLHOLDERS

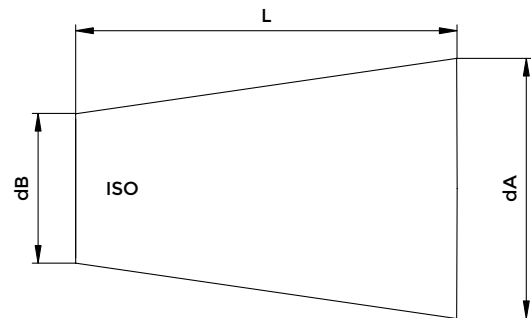
The new high-speed toolholders are balanced in the Grade G 2,5 at 25000 rpm.

#### CONSTRUCTIVE FEATURES FOR HIGH-SPEED TOOLHOLDERS

- Manufactured with casehardening Steel.
- Casehardened with depth 0,6 - 0,8 mm
- Hardened-Tempered
- Hardness HRC 58+-2, Strength 800-1000 N/mm<sup>2</sup>
- Black oxidized
- Internal and external grinding finish of the cone
- Grinding finish on the front side and on the thread of collet nuts.
- Tested 100% with certified measuring instruments and supplied with balancing certificate

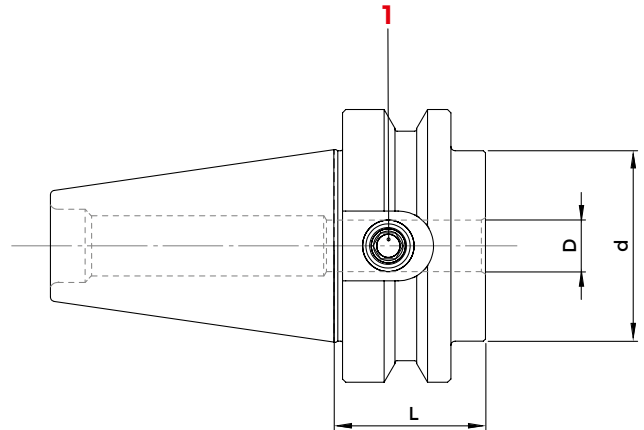
#### CONE TOLERANCE

According to the class AT3

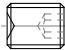
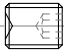


ISO	L	dA-dB	AT3
30	42	12.250	+0.002
40	59	17.208	+0.003
50	92	26.833	+0.004

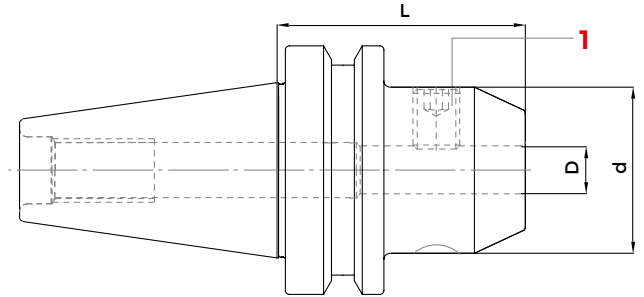
## SHORT TYPE WELDON END MILL HOLDERS



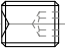
### JIS-B 6339 MAS 403/BT SHAPE AD/B - DIN 1835 B

COD. (AD)	COD. (AD+B)	DESCRIPTION	ISO	D	L	d	G6,3 12000	G6,3 15000	1	1
									SCREW 1	SCREW 2
										
263-115630	-	BT 30 - WE 12 / H35	30	12	35	42	•	-	811-106013	-
0976	-	BT 30 - WE 16 / H35	30	16	35	42	•	-	811-106026	-
263-115650	-	BT 30 - WE 20 / H35	30	20	35	43	•	-	811-106024	-
263-115660	-	BT 30 - WE 25 / H35	30	25	35	45,5	•	-	811-106026	-
3053	-	BT 40 - WE 12 / H 35	40	12	35	44	-	•	811-106005	-
213-11493	5122	BT 40 - WE 16 / H 35	40	16	35	44	-	•	0068	-
213-11494	5123	BT 40 - WE 20 / H 35	40	20	35	44	-	•	811-106027	-
213-11495	-	BT 40 - WE 25 / H 35	40	25	35	44	-	•	811-106026	-
213-11496	4554	BT 40 - WE 25 / H 60	40	25	60	49	-	•	811-106026	811-106014
3069	-	BT 40 - WE 32 / H 40	40	32	40	44	-	•	0074	-
213-11497	4556	BT 40 - WE 32 / H 70	40	32	70	72	-	•	811-106026	4977
213-11498	-	BT 50 - WE 16 / H 44	50	16	44	70	•	-	811-106006	-
213-11499	5126	BT 50 - WE 20 / H 44	50	20	44	70	•	-	811-106007	-
263-11401	5127	BT 50 - WE 25 / H 44	50	25	44	70	•	-	811-106008	-
263-11402	5128	BT 50 - WE 32 / H 44	50	32	44	70	•	-	811-106009	-
8468	8473	BT 50 - WE 40 / H 44	50	40	44	70	•	-	0259	-

## WELDON END MILL HOLDERS

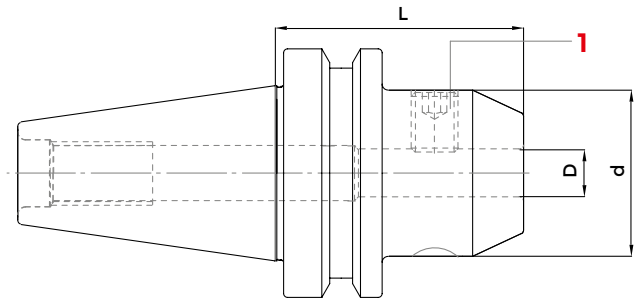


### JIS-B 6339 MAS 403/BT SHAPE AD/B - DIN 1835 B

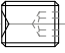
COD. (AD)	COD. (AD+B)	DESCRIPTION	ISO	D	L	d	G6,3 12000	G6,3 15000	1 SCREW
									
263-11501	-	BT 30 - WE 6 / H 50	30	6	50	25	-	•	811-106001
263-11502	-	BT 30 - WE 8 / H 50	30	8	50	28	-	•	811-106002
263-11503	-	BT 30 - WE 10 / H 50	30	10	50	35	-	•	811-106004
263-11504	-	BT 30 - WE 12 / H 55	30	12	55	42	-	•	811-106005
263-11505	-	BT 30 - WE 16 / H 63	30	16	63	48	-	•	811-106006
263-11506	-	BT 30 - WE 20 / H 70	30	20	70	52	-	•	811-106007
213-11413	4909	BT 40 - WE 6 / H 50	40	6	50	25	-	•	811-106001
213-11434	5863	BT 40 - WE 6 / H 100	40	6	100	25	-	•	811-106001
8004	8021	BT 40 - WE 6 / H 130	40	6	130	25	-	•	811-106001
213-11442	5864	BT 40 - WE 6 / H 160	40	6	160	25	-	•	811-106001
4253	4391	BT 40 - WE 6 / H 200	40	6	200	25	-	•	811-106001
213-11414	4910	BT 40 - WE 8 / H 50	40	8	50	28	-	•	811-106002
213-11435	5865	BT 40 - WE 8 / H 100	40	8	100	28	-	•	811-106002
8005	8022	BT 40 - WE 8 / H 130	40	8	130	28	-	•	811-106002
213-11443	5866	BT 40 - WE 8 / H 160	40	8	160	28	-	•	811-106002
4254	4396	BT 40 - WE 8 / H 200	40	8	200	28	-	•	811-106002
213-11415	4911	BT 40 - WE 10 / H 63	40	10	63	35	-	•	811-106004
213-11436	5867	BT 40 - WE 10 / H 100	40	10	100	35	-	•	811-106004
8006	8023	BT 40 - WE 10 / H 130	40	10	130	35	-	•	811-106004
213-11444	5868	BT 40 - WE 10 / H 160	40	10	160	35	-	•	811-106004
4255	4397	BT 40 - WE 10 / H 200	40	10	200	35	-	•	811-106004
213-11416	4912	BT 40 - WE 12 / H 63	40	12	63	42	-	•	811-106005
213-11437	5869	BT 40 - WE 12 / H 100	40	12	100	42	-	•	811-106005
8007	8024	BT 40 - WE 12 / H 130	40	12	130	42	-	•	811-106005
213-11445	5870	BT 40 - WE 12 / H 160	40	12	160	42	-	•	811-106005
4262	4401	BT 40 - WE 12 / H 200	40	12	200	42	-	•	811-106005
213-11417	4913	BT 40 - WE 14 / H 63	40	14	63	44	-	•	811-106005
213-11438	5871	BT 40 - WE 14 / H 100	40	14	100	44	-	•	811-106005
8008	8025	BT 40 - WE 14 / H 130	40	14	130	44	-	•	811-106005
4268	4432	BT 40 - WE 14 / H 160	40	14	160	44	-	•	811-106005
-	4433	BT 40 - WE 14 / H 200	40	14	200	44	-	•	811-106006
213-11418	4914	BT 40 - WE 16 / H 63	40	16	63	48	-	•	811-106006
213-11439	5872	BT 40 - WE 16 / H 100	40	16	100	48	-	•	811-106006
8009	8026	BT 40 - WE 16 / H 130	40	16	130	48	-	•	811-106006
213-11446	5873	BT 40 - WE 16 / H 160	40	16	160	48	-	•	811-106006
4270	4434	BT 40 - WE 16 / H 200	40	16	200	48	-	•	811-106006

follows >>

## WELDON END MILL HOLDERS

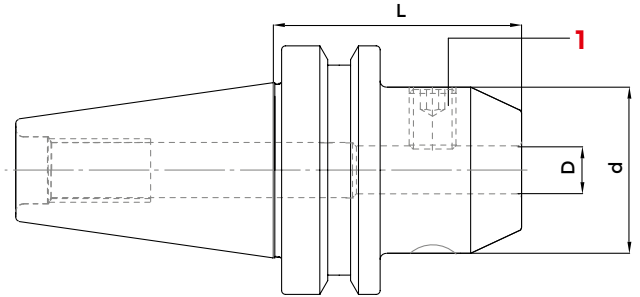


### JIS-B 6339 MAS 403/BT SHAPE AD/B - DIN 1835 B

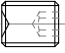
COD. (AD)	COD. (AD+B)	DESCRIPTION	ISO	D	L	d	G6,3 12000	G6,3 15000	1 SCREW
									
213-11419	4915	BT 40 - WE 18 / H 63	40	18	63	50	-	•	811-106006
213-11440	5874	BT 40 - WE 18 / H 100	40	18	100	50	-	•	811-106006
4272	-	BT 40 - WE 18 / H 200	40	18	200	50	-	•	811-106006
213-11420	4916	BT 40 - WE 20 / H 63	40	20	63	52	-	•	811-106007
213-11441	5875	BT 40 - WE 20 / H 100	40	20	100	52	-	•	811-106007
5067	4437	BT 40 - WE 20 / H 130	40	20	130	52	-	•	811-106007
213-11447	5876	BT 40 - WE 20 / H 160	40	20	160	52	-	•	811-106007
4274	4446	BT 40 - WE 20 / H 200	40	20	200	52	-	•	811-106007
213-11421	4917	BT 40 - WE 25 / H 90	40	25	90	65	-	•	811-106008
5069	4939	BT 40 - WE 25 / H 130	40	25	130	65	-	•	811-106008
213-11468	4448	BT 40 - WE 25 / H 160	40	25	160	65	-	•	811-106008
4358	4479	BT 40 - WE 25 / H 200	40	25	200	65	-	•	811-106008
213-11422	4918	BT 40 - WE 32 / H 100	40	32	100	72	-	•	811-106009
5071	4480	BT 40 - WE 32 / H 130	40	32	130	72	-	•	811-106009
213-11469	4481	BT 40 - WE 32 / H 160	40	32	160	72	-	•	811-106009
4359	4482	BT 40 - WE 32 / H 200	40	32	200	72	-	•	811-106009
213-11465	4919	BT 40 - WE 40 / H 105	40	40	105	80	-	•	811-106009
213-11423	4920	BT 50 - WE 6 / H 63	50	6	63	25	•	-	811-106001
213-11448	5877	BT 50 - WE 6 / H 100	50	6	100	25	•	-	811-106001
8011	8028	BT 50 - WE 6 / H 130	50	6	130	25	•	-	811-106001
5568	5878	BT 50 - WE 6 / H 160	50	6	160	25	•	-	811-106001
213-11484	4485	BT 50 - WE 6 / H 200	50	6	200	25	•	-	811-106001
213-11424	4921	BT 50 - WE 8 / H 63	50	8	63	28	•	-	811-106002
213-11449	5879	BT 50 - WE 8 / H 100	50	8	100	28	•	-	811-106002
8012	8029	BT 50 - WE 8 / H 130	50	8	130	28	•	-	811-106002
213-11458	5880	BT 50 - WE 8 / H 160	50	8	160	28	•	-	811-106002
213-11485	4497	BT 50 - WE 8 / H 200	50	8	200	28	•	-	811-106002
213-11425	4922	BT 50 - WE 10 / H 70	50	10	70	35	•	-	811-106004
213-11450	5907	BT 50 - WE 10 / H 100	50	10	100	35	•	-	811-106004
8013	8030	BT 50 - WE 10 / H 130	50	10	130	35	•	-	811-106004
213-11459	5908	BT 50 - WE 10 / H 160	50	10	160	35	•	-	811-106004
213-11486	4498	BT 50 - WE 10 / H 200	50	10	200	35	•	-	811-106004
213-11426	4923	BT 50 - WE 12 / H 80	50	12	80	42	•	-	811-106005
213-11451	5912	BT 50 - WE 12 / H 100	50	12	100	42	•	-	811-106005
8014	8031	BT 50 - WE 12 / H 130	50	12	130	42	•	-	811-106005
213-11460	5909	BT 50 - WE 12 / H 160	50	12	160	42	•	-	811-106005

follows >>

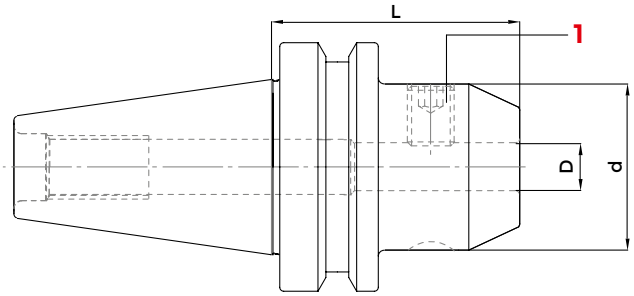
## WELDON END MILL HOLDERS



### JIS-B 6339 MAS 403/BT SHAPE AD/B - DIN 1835 B

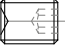
COD. (AD)	COD. (AD+B)	DESCRIPTION	ISO	D	L	d	G6,3 12000	G6,3 15000	1 SCREW
									
213-11487	4499	BT 50 - WE 12 / H 200	50	12	200	42	•	-	811-106005
213-11427	4924	BT 50 - WE 14 / H 80	50	14	80	44	•	-	811-106005
4371	4500	BT 50 - WE 14 / H 100	50	14	100	44	•	-	811-106005
8015	8032	BT 50 - WE 14 / H 130	50	14	130	44	•	-	811-106005
4375	-	BT 50 - WE 14 / H 160	50	14	160	44	•	-	811-106005
4376	-	BT 50 - WE 14 / H 200	50	14	200	44	•	-	811-106005
213-11428	4925	BT 50 - WE 16 / H 80	50	16	80	48	•	-	811-106006
213-11453	5913	BT 50 - WE 16 / H 100	50	16	100	48	•	-	811-106006
8016	8033	BT 50 - WE 16 / H 130	50	16	130	48	•	-	811-106006
213-11461	5910	BT 50 - WE 16 / H 160	50	16	160	48	•	-	811-106006
213-11489	4523	BT 50 - WE 16 / H 200	50	16	200	48	•	-	811-106006
213-11429	4926	BT 50 - WE 18 / H 80	50	18	80	50	•	-	811-106006
4381	4524	BT 50 - WE 18 / H 100	50	18	100	50	•	-	811-106006
8017	-	BT 50 - WE 18 / H 130	50	18	130	50	•	-	811-106006
4382	4525	BT 50 - WE 18 / H 160	50	18	160	50	•	-	811-106006
213-11430	4927	BT 50 - WE 20 / H 80	50	20	80	52	•	-	811-106007
213-11455	5914	BT 50 - WE 20 / H 100	50	20	100	52	•	-	811-106007
8018	8035	BT 50 - WE 20 / H 130	50	20	130	52	•	-	811-106007
213-11462	5911	BT 50 - WE 20 / H 160	50	20	160	52	•	-	811-106007
213-11491	4527	BT 50 - WE 20 / H 200	50	20	200	52	•	-	811-106007
213-11431	4928	BT 50 - WE 25 / H 100	50	25	100	65	•	-	811-106008
8019	8036	BT 50 - WE 25 / H 130	50	25	130	65	•	-	811-106008
213-11472	BT50H160WE25ADB	BT 50 - WE 25 / H 160	50	25	160	65	•	-	811-106008
213-11492	4528	BT 50 - WE 25 / H 200	50	25	200	65	•	-	811-106008
213-11432	4929	BT 50 - WE 32 / H 105	50	32	105	72	•	-	811-106009
8020	8037	BT 50 - WE 32 / H 130	50	32	130	72	•	-	811-106009
213-11473	5916	BT 50 - WE 32 / H 160	50	32	160	72	•	-	811-106009
213-11463	4529	BT 50 - WE 32 / H 200	50	32	200	72	•	-	811-106009
213-11433	4930	BT 50 - WE 40 / H 120	50	40	120	80	•	-	811-106009
5085	5917	BT 50 - WE 40 / H 160	50	40	160	80	•	-	811-106009
213-11594	4530	BT 50 - WE 40 / H 200	50	40	200	80	•	-	811-106009
263-11425	4552	BT 50 - WE 50 / H 125	50	50	125	100	•	-	4978

**WELDON END MILL HOLDERS - HIGH SPEED LINE**

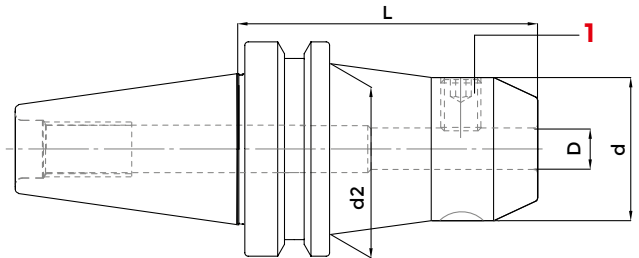


**JIS-B 6339 MAS 403/BT A - DIN 1835 B**

**HIGH SPEED LINE**

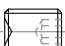
COD.	DESCRIPTION	ISO	D	L	d	G2.5 25000	1
							SCREW
							
213-91401	BT40H50WE06	40	6	50	25	•	811-106001
213-91402	BT40H50WE08	40	8	50	28	•	811-106002
213-91403	BT40H63WE10	40	10	63	35	•	811-106004
WE91404	BT40H63WE12	40	12	63	42	•	811-106005
213-91406	BT40H63WE16	40	16	63	48	•	811-106006
WE91408	BT40H63WE20	40	20	63	52	•	811-106007
213-91409	BT40H90WE25	40	25	90	65	•	811-106008
213-91410	BT40H100WE32	40	32	100	72	•	811-106009

**WELDON END MILL HOLDERS - LONG SERIES - HIGH SPEED LINE**



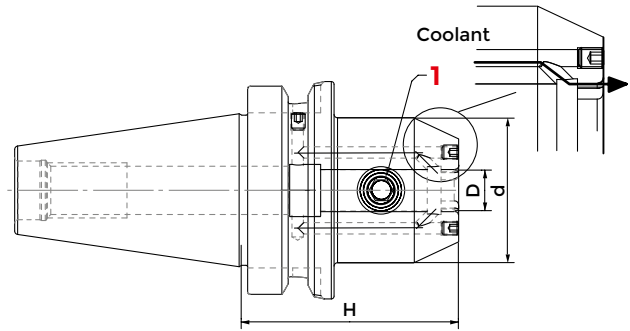
**JIS-B 6339 MAS 403/BT A - DIN 1835 B**

**HIGH SPEED LINE**


COD.	DESCRIPTION	ISO	D	L	d	d2	G2.5 25000	1
								SCREW
								
213-91424	BT40H100WE06	40	6	100	25	35	•	811-106001
213-91425	BT40H100WE08	40	8	100	28	38	•	811-106002
213-91426	BT40H100WE10	40	10	100	35	40	•	811-106004
WE91427	BT40H100WE12	40	12	100	42	-	•	811-106005
213-91429	BT40H100WE16	40	16	100	48	-	•	811-106006
213-91431	BT40H100WE20	40	20	100	52	-	•	811-106007



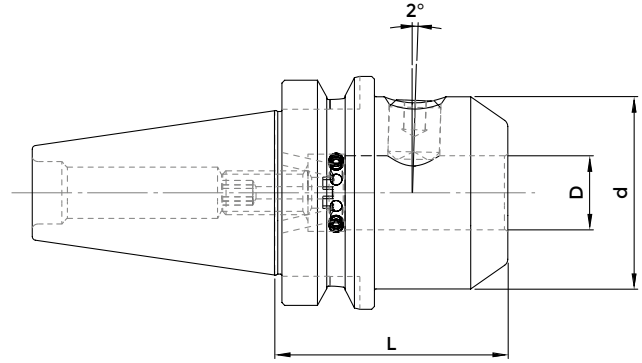
## WELDON END MILL HOLDERS - SHORT SERIES WITH COOLANT CHANNELS



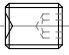
### JIS-B 6339 MAS 403/BT SHAPE AD/B - DIN 1835 B

COD.	DESCRIPTION	ISO	D	H	d	G6,3 12000	G6,3 15000	1
								SCREW
								
213-61423	BT 40 - WEC 6 / H 50	40	6	50	25	-	•	811-106001
213-61424	BT 40 - WEC 8 / H 50	40	8	50	28	-	•	811-106002
213-61425	BT 40 - WEC 10 / H 63	40	10	63	35	-	•	811-106004
213-61426	BT 40 - WEC 12 / H 63	40	12	63	42	-	•	811-106005
213-61427	BT 40 - WEC 14 / H 63	40	14	63	44	-	•	811-106005
213-61428	BT 40 - WEC 16 / H 63	40	16	63	48	-	•	811-106006
213-61429	BT 40 - WEC 18 / H 63	40	18	63	50	-	•	811-106006
213-61430	BT 40 - WEC 20 / H 63	40	20	63	52	-	•	811-106007
213-61431	BT 40 - WEC 25 / H 90	40	25	90	65	-	•	811-106008
213-61432	BT 40 - WEC 32 / H 100	40	32	100	72	-	•	811-106009
213-61433	BT 40 - WEC 40 / H 105	40	40	105	80	-	•	811-106009
213-61437	BT 50 - WEC 12 / H 80	50	12	80	42	•	-	811-106005
213-61439	BT 50 - WEC 16 / H 80	50	16	80	48	•	-	811-106006
213-61441	BT 50 - WEC 20 / H 80	50	20	80	52	•	-	811-106007
213-61442	BT 50 - WEC 25 / H 100	50	25	100	65	•	-	811-106008
213-61443	BT 50 - WEC 32 / H 105	50	32	105	72	•	-	811-106009
213-61444	BT 50 - WEC 40 / H 120	50	40	120	80	•	-	811-106009

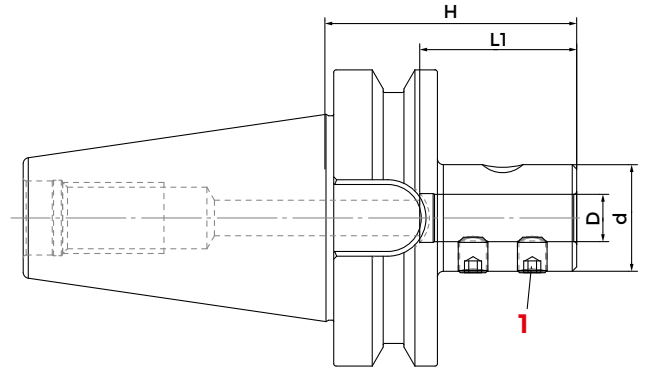
## WHISTLE NOTCH END MILL HOLDERS



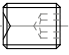
### JIS-B 6339 MAS 403/BT SHAPE AD - DIN 1835 B

COD.	DESCRIPTION	ISO	D	L	d	G6.3 12000	1
							SCREW
							
4666	BT 40 - WN 6 / H 50	40	6	50	25	•	811-106001
4667	BT 40 - WN 8 / H 50	40	8	50	28	•	811-106002
4668	BT 40 - WN 10 / H 63	40	10	63	35	•	811-106004
4669	BT 40 - WN 12 / H 63	40	12	63	42	•	811-106005
4670	BT 40 - WN 14 / H 63	40	14	63	44	•	811-106005
213-31417	BT 40 - WN 16 / H 63	40	16	63	48	•	811-106006
4672	BT 40 - WN 18 / H 63	40	18	63	50	•	811-106006
213-31419	BT 40 - WN 20 / H 63	40	20	63	52	•	811-106007
213-31420	BT 40 - WN 25 / H 90	40	25	90	65	•	811-106008
213-31421	BT 40 - WN 32 / H 100	40	32	100	72	•	811-106009
213-31422	BT 40 - WN 40 / H 105	40	40	105	80	•	811-106009

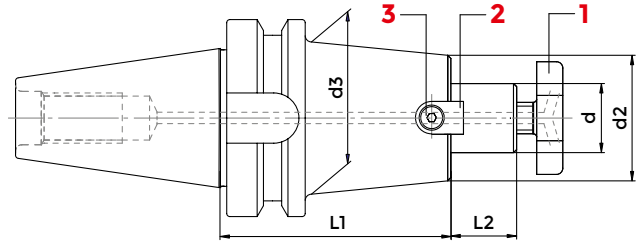
## INDEXABLE DRILL HOLDERS



### JIS-B 6339 MAS-403/BT SHAPE AD

COD.	DESCRIPTION	ISO	D	d	H	L1	G6.3 12000	1
								SCREW
								
8574	BT 40 - D. 16 P	40	16	36	75	54	•	811-402003
217-90989	BT 40 - D. 20 P	40	20	40	75	54	•	811-402003
217-90990	BT 40 - D. 25 P	40	25	45	80	59	•	811-402005
217-90991	BT 40 - D. 32 P	40	32	52	85	63	•	811-402005
8721	BT 50 - D. 16 P	50	16	36	80	54	•	811-402003
217-90993	BT 50 - D. 20 P	50	20	40	80	54	•	811-402003
217-90994	BT 50 - D. 25 P	50	25	45	90	59	•	811-402005
217-90995	BT 50 - D. 32 P	50	32	52	90	63	•	811-402005
217-90996	BT 50 - D. 40 P	50	40	60	100	73	•	811-402007

## FACE MILL HOLDERS - TENONS DRIVE

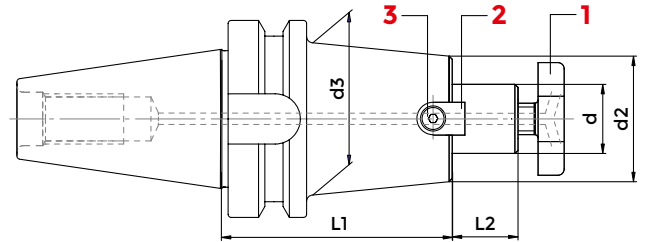


### JIS-B 6339 MAS 403/BT SHAPE AD/B - ISO 3937

COD. (AD)	COD. (AD+B)	DESCRIPTION	ISO	d	L1	L2	d2	d3	G6,3 8000	1	2	3
										CROSS SCREW	TENON	SCREW WRENCH
216-71501	-	BT 30 - D. 16 FISSO / H 35	30	16	35	17	38	-	•	811-107003	814-202280	811-101004 816-130002
216-71502	-	BT 30 - D. 22 FISSO / H 40	30	22	40	19	48	-	•	811-107004	814-202250	811-101011 816-130003
216-71503	-	BT 30 - D. 27 FISSO / H 40	30	27	40	21	58	-	•	811-107005	814-202270	7414 816-130004
216-71507	216-71401	BT 40 - D. 16 FISSO / H 45	40	16	45	17	38	-	•	811-107003	814-202280	811-101004 816-130002
216-71522	216-71411	BT 40 - D. 16 FISSO / H 100	40	16	100	17	38	-	•	811-107003	814-202280	811-101004 816-130002
9420	216-71428	BT 40 - D. 16 FISSO / H 130	40	16	130	17	38	-	•	811-107003	814-202280	811-101004 816-130002
216-71523	216-71437	BT 40 - D. 16 FISSO / H 160	40	16	160	17	38	-	•	811-107003	814-202280	811-101004 816-130002
216-71508	216-71402	BT 40 - D. 22 FISSO / H 45	40	22	45	19	48	-	•	811-107004	814-202250	811-101011 816-130003
216-71526	216-71412	BT 40 - D. 22 FISSO / H 100	40	22	100	19	46	48	•	811-107004	814-202250	811-101011 816-130003
216-71530	-	BT 40 - D. 22 FISSO / H 100 FIS.63	40	22	100	19	50	59	•	811-107004	814-202250	811-101011 816-130003
9421	216-71429	BT 40 - D. 22 FISSO / H 130	40	22	130	19	46	48	•	811-107004	814-202250	811-101011 816-130003
216-71527	216-71438	BT 40 - D. 22 FISSO / H 160	40	22	160	19	46	48	•	811-107004	814-202250	811-101011 816-130003
216-71509	216-71403	BT 40 - D. 27 FISSO / H 45	40	27	45	21	58	-	•	811-107005	814-202270	7414 816-130004
216-71599	216-71413	BT 40 - D. 27 FISSO / H 100	40	27	100	21	48	-	•	811-107005	814-202160	811-101017 816-130004
9422	216-71430	BT 40 - D. 27 FISSO / H 130	40	27	130	21	55	-	•	811-107005	814-202270	7414 816-130004
5591	216-71452	BT 40 - D. 27 FISSO / H 160	40	27	160	21	55	-	•	811-107005	814-202270	7414 816-130004
216-71510	216-71404	BT 40 - D. 32 FISSO / H 50	40	32	50	24	78	-	•	811-107006	814-202630	811-101029 816-130005
266-71501	5888	BT 40 - D. 32 FISSO / H 100	40	32	100	24	58	-	•	811-107006	814-202170	811-101027 816-130005
8419	216-71453	BT 40 - D. 32 FISSO / H 160	40	32	160	24	66	-	•	811-107006	814-202290	0207 816-130005
216-71511	216-71405	BT 40 - D. 40 FISSO / H 55	40	40	55	27	88	-	•	811-107006	814-202290	0207 816-130005
266-71502	8445	BT 40 - D. 40 FISSO / H 100	40	40	100	27	70	-	•	811-107007	814-202710	811-101029 816-130006
-	9025	BT 40 - D. 40 FISSO / H 130	40	40	130	27	88	60	•	811-107007	814-202180	0207 816-130006
8421	216-71454	BT 40 - D. 40 FISSO / H 160	40	40	160	27	88	-	•	811-107007	814-202710	811-101029 816-130006
216-71517	216-71406	BT 50 - D. 16 FISSO / H 60	50	16	60	17	38	-	•	811-107003	814-202280	811-101004 816-130002
216-71589	216-71415	BT 50 - D. 16 FISSO / H 100	50	16	100	17	38	-	•	811-107003	814-202280	811-101004 816-130002
9425	216-71432	BT 50 - D. 16 FISSO / H 130	50	16	130	17	38	-	•	811-107003	814-202280	811-101004 816-130002
216-71591	216-71439	BT 50 - D. 16 FISSO / H 160	50	16	160	17	38	-	•	811-107003	814-202280	811-101004 816-130002
216-71593	216-71446	BT 50 - D. 16 FISSO / H 200	50	16	200	17	38	-	•	811-107003	814-202280	811-101004 816-130002
216-71518	216-71407	BT 50 - D. 22 FISSO / H 60	50	22	60	19	48	-	•	811-107004	814-202250	811-101011 816-130003
216-71534	216-71416	BT 50 - D. 22 FISSO / H 100	50	22	100	19	46	49	•	811-107004	814-202250	811-101011 816-130003
9492	-	BT 50 - D. 22 FISSO / H 100 FIS.63	50	22	100	19	50	60	•	811-107004	814-202250	811-101011 816-130003

follows >>

## FACE MILL HOLDERS - TENONS DRIVE



### JIS-B 6339 MAS 403/BT SHAPE AD/B - ISO 3937

COD. (AD)	COD. (AD+B)	DESCRIPTION	ISO	d	L1	L2	d2	d3	G6,3 8000	1	2	3	WRENCH
										CROSS SCREW	TENON	SCREW	
9426	216-71433	BT 50 - D. 22 FISSO / H 130	50	22	130	19	46	56	•	811-107004	814-202250	811-101011	816-130003
216-71535	216-71440	BT 50 - D. 22 FISSO / H 160	50	22	160	19	46	49	•	811-107004	814-202250	811-101011	816-130003
216-71540	-	BT 50 - D. 22 FISSO / H 160 FIS.63	50	22	160	19	50	60	•	811-107004	814-202250	811-101011	816-130003
216-71541	-	BT 50 - D. 22 FISSO / H 200 FIS.63	50	22	200	19	50	60	•	811-107004	814-202250	811-101011	816-130003
216-71519	216-71408	BT 50 - D. 27 FISSO / H 60	50	27	60	21	58	-	•	811-107005	814-202270	7414	816-130004
216-71544	216-71417	BT 50 - D. 27 FISSO / H 100	50	27	100	21	55	78	•	811-107005	814-202270	7414	816-130004
9427	216-71434	BT 50 - D. 27 FISSO / H 130	50	27	130	21	55	78	•	811-107005	814-202270	7414	816-130004
216-71545	216-71441	BT 50 - D. 27 FISSO / H 160	50	27	160	21	55	78	•	811-107005	814-202270	7414	816-130004
216-71520	216-71409	BT 50 - D. 32 FISSO / H 60	50	32	60	24	78	-	•	811-107006	814-202630	811-101029	816-130005
216-71590	216-71418	BT 50 - D. 32 FISSO / H 100	50	32	100	24	66	78	•	811-107006	814-202290	811-101029	816-130005
9428	216-71435	BT 50 - D. 32 FISSO / H 130	50	32	130	24	66	78	•	811-107006	814-202290	811-101029	816-130005
216-71592	216-71442	BT 50 - D. 32 FISSO / H 160	50	32	160	24	66	78	•	811-107006	814-202290	811-101029	816-130005
216-71521	216-71410	BT 50 - D. 40 FISSO / H 60	50	40	60	27	88	-	•	811-107007	814-202710	811-101029	816-130006
266-71503	216-71419	BT 50 - D. 40 FISSO / H 100	50	40	100	27	70	78	•	811-107007	814-202180	0207	816-130006
-	216-71436	BT 50 - D. 40 FISSO / H 130	50	40	130	27	70	-	•	811-107007	814-202180	0207	816-130006
8434	216-71443	BT 50 - D. 40 FISSO / H 160	50	40	160	27	70	78	•	811-107007	814-202180	0207	816-130006

#### ACCESSORIES

p. 674



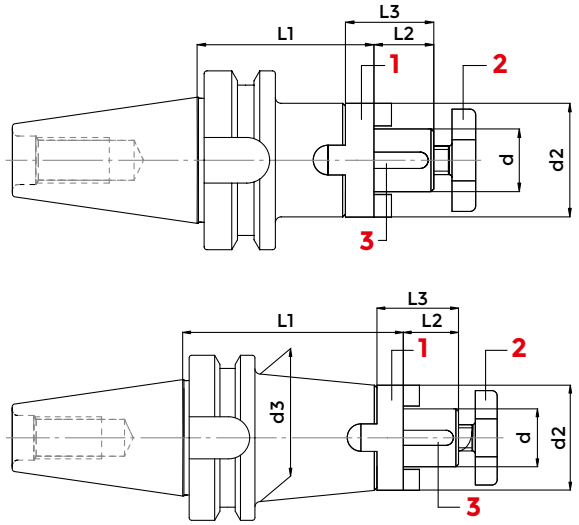
p. 676



p. 675



## COMBI-SHELL MILL HOLDERS



### JIS-B 6339 MAS 403/BT SHAPE A - DIN 6358

COD.	DESCRIPTION	ISO	d	L1	L2	L3	d2	d3	G6,3 8000	1	2	3	WRENCH
										COUPLING RING	CROSS SCREW	KEY	
216-11527	BT 30 - D.16 C / H 50	30	16	50	17	27	32	-	•				
0953	BT 30 - D.16 C / H 100	30	16	100	17	27	32	-	•	814-30001	811-107003	814-201010	816-130002
216-11528	BT 30 - D.22 C / H 50	30	22	50	19	31	40	-	•	814-30002	811-107004	814-201020	816-130003
216-11537	BT 30 - D.22 C / H 100	30	22	100	19	31	40	-	•	814-30002	811-107004	0016	816-130003
3943	BT 30 - D.27 C / H 55	30	27	55	21	33	48	-	•	814-30003	811-107005	814-201030	816-130004
216-11501	BT 40 - D.16 C / H 55	40	16	55	17	27	32	-	•	814-30001	811-107003	814-201010	816-130002
216-11517	BT 40 - D.16 C / H 100	40	16	100	17	27	32	44	•	814-30001	811-107003	814-201010	816-130002
8483	BT 40 - D.16 C / H 160	40	16	160	17	27	32	44	•	814-30001	811-107003	814-201010	816-130002
216-11502	BT 40 - D.22 C / H 55	40	22	55	19	31	40	-	•	814-30002	811-107004	814-201020	816-130003
216-11518	BT 40 - D.22 C / H 100	40	22	100	19	31	40	-	•	814-30002	811-107004	814-201020	816-130003
8484	BT 40 - D.22 C / H 160	40	22	160	19	31	40	47	•	814-30002	811-107004	814-201020	816-130003
216-11503	BT 40 - D.27 C / H 55	40	27	55	21	33	48	-	•	814-30003	811-107005	814-201030	816-130004
216-11519	BT 40 - D.27 C / H 100	40	27	100	21	33	48	-	•	814-30003	811-107005	814-201030	816-130004
8485	BT 40 - D.27 C / H 160	40	27	160	21	33	48	55	•	814-30003	811-107005	814-201030	816-130004
216-11504	BT 40 - D.32 C / H 60	40	32	60	24	38	58	-	•	814-30004	811-107006	814-201040	816-130005
216-11520	BT 40 - D.32 C / H 100	40	32	100	24	38	58	-	•	814-30004	811-107006	814-201040	816-130005
8486	BT 40 - D.32 C / H 160	40	32	160	24	38	58	-	•	814-30004	811-107006	814-201040	816-130005
216-11505	BT 40 - D.40 C / H 60	40	40	60	27	41	70	-	•	814-30005	811-107007	814-201050	816-130006
216-11521	BT 40 - D.40 C / H 100	40	40	100	27	41	70	-	•	814-30005	811-107007	814-201050	816-130006
216-11507	BT 50 - D.16 C / H 70	50	16	70	17	27	32	-	•	814-30001	811-107003	814-201010	816-130002
4117	BT 50 - D.16 C / H 100	50	16	100	17	27	32	44	•	814-30001	811-107003	814-201010	816-130002
216-11508	BT 50 - D.22 C / H 70	50	22	70	19	31	40	-	•	814-30002	811-107004	814-201020	816-130003
216-11523	BT 50 - D.22 C / H 100	50	22	100	19	31	40	50	•	814-30002	811-107004	814-201020	816-130003
216-11509	BT 50 - D.27 C / H 70	50	27	70	21	33	48	-	•	814-30003	811-107005	814-201030	816-130004
216-11524	BT 50 - D.27 C / H 100	50	27	100	21	33	48	60	•	814-30003	811-107005	814-201030	816-130004
216-11510	BT 50 - D.32 C / H 70	50	32	70	24	38	58	-	•	814-30004	811-107006	814-201040	816-130005
216-11525	BT 50 - D.32 C / H 100	50	32	100	24	38	58	-	•	814-30004	811-107006	814-201040	816-130005
3816	BT 50 - D.40 C / H 70	50	40	70	27	41	70	-	•	814-30005	811-107007	814-201050	816-130006
4121	BT 50 - D.40 C / H 100	50	40	100	27	41	70	-	•	814-30005	811-107007	814-201050	816-130006

#### ACCESSORIES

p. 675



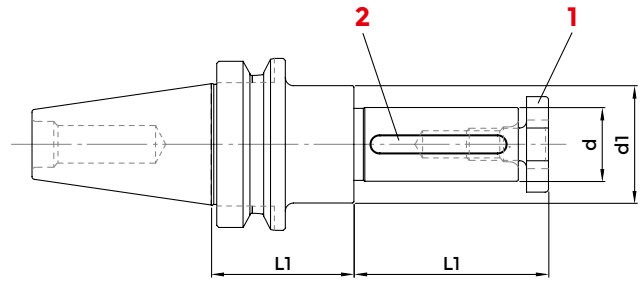
p. 674



p. 675



## MILL HOLDERS WITH FEATHER KEY



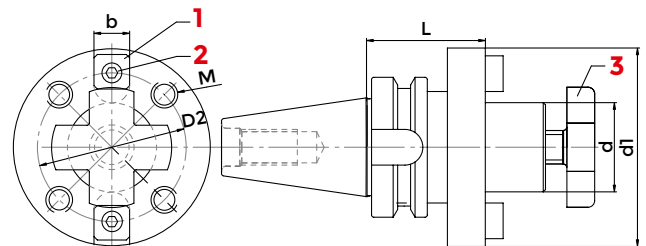
### JIS-B 6339 MAS 403/BT SHAPE A - DIN 6358

COD.	DESCRIPTION	ISO	d	L1	L2	d1	G6.3 8000	1	2	WRENCH
								CROSS SCREW	KEY	
8503	BT 40 - D. 16 CHT	40	16	52	30	28	•			
8504	BT 40 - D. 22 CHT	40	22	52	40	36	•	811-107003	0147	816-130002
8505	BT 40 - D. 27 CHT	40	27	52	60	43	•	811-107004	0148	816-130003
8506	BT 40 - D. 32 CHT	40	32	52	60	48	•	811-107005	0149	816-130004
8507	BT 40 - D. 40 CHT	40	40	52	60	56	•	811-107006	0150	816-130005
								811-107007	0151	816-130006

#### ACCESSORIES



## FACE MILL HOLDER FOR FACE MILLING CUTTERS



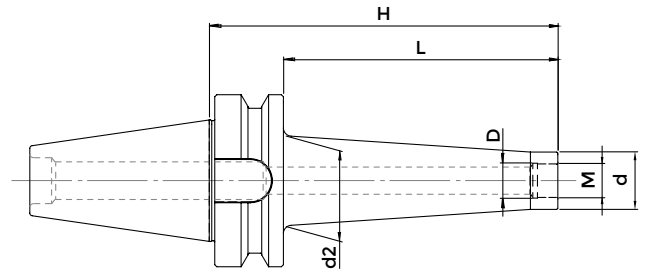
### JIS-B 6339 MAS 403/BT A - DIN 6357

COD.	DESCRIPTION	ISO	d	L	d1	D2	M	b	G6.3 8000	1	2	3
										SCREW	TENON	KEY
4186	BT 40 - D. 40 FM	40	40	60	89	66,7	M 12	15,9	•			
216-21502	BT 50 - D. 40 FM	50	40	70	89	66,7	M 12	15,9	•	0207	814-202080	811-107007
216-21503	BT 50 - D. 60 FM	50	60	80	129	101,6	M16	25,4	•	811-101064	814-202120	-

#### ACCESSORIES



## END MILL HOLDERS FOR MILLING CUTTERS WITH THREADED SHANKS

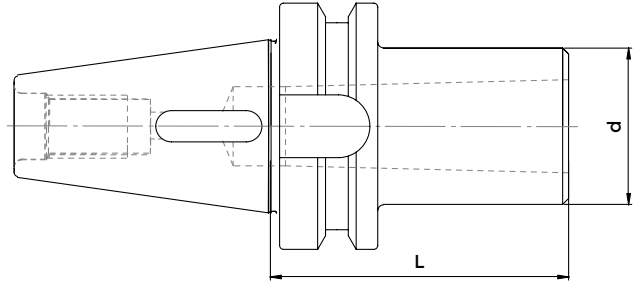


### JIS-B 6339 MAS 403/BT SHAPE A/D - DIN 6358

COD.	DESCRIPTION	ISO	M	D	d	d2	H	L	G6.3 12000
217-81420	BT 40 - M 8 / H 55	40	M 8	8,5	13	15	55	28	•
7828	BT 40 - M 8 / H 77	40	M 8	8,5	13	23	77	50	•
217-81402	BT 40 - M 8 / H 102	40	M 8	8,5	13	23	102	75	•
7830	BT 40 - M 8 / H 127	40	M 8	8,5	13	25	127	100	•
217-81421	BT 40 - M 10 / H 55	40	M 10	10,5	18	20	55	28	•
217-81404	BT 40 - M 10 / H 77	40	M 10	10,5	18	23	77	50	•
7833	BT 40 - M 10 / H 102	40	M 10	10,5	18	28	102	75	•
217-81406	BT 40 - M 10 / H 127	40	M 10	10,5	18	32	127	100	•
217-81422	BT 40 - M 12 / H 55	40	M 12	12,5	21	24	55	28	•
217-81407	BT 40 - M 12 / H 77	40	M 12	12,5	21	24	77	50	•
217-81408	BT 40 - M 12 / H 102	40	M 12	12,5	21	31	102	75	•
217-81409	BT 40 - M 12 / H 127	40	M 12	12,5	21	33	127	100	•
217-81423	BT 40 - M 16 / H 55	40	M 16	17,0	29	32	55	28	•
217-81410	BT 40 - M 16 / H 77	40	M 16	17,0	29	34	77	50	•
217-81411	BT 40 - M 16 / H 102	40	M 16	17,0	29	34	102	75	•
217-81412	BT 40 - M 16 / H 127	40	M 16	17,0	29	36	127	100	•
217-81413	BT 40 - M 16 / H 152	40	M 16	17,0	29	40	152	125	•
217-81414	BT 50 - M 12 / H 88	50	M 12	12,5	21	24	88	50	•
7845	BT 50 - M 12 / H 138	50	M 12	12,5	21	33	138	100	•
7846	BT 50 - M 12 / H 188	50	M 12	12,5	21	40	188	150	•
8719	BT 50 - M 12 / H 254	50	M 12	12,5	21	42	254	216	•
217-81417	BT 50 - M 16 / H 88	50	M 16	17,0	29	34	88	50	•
217-81418	BT 50 - M 16 / H 138	50	M 16	17,0	29	36	138	100	•
217-81419	BT 50 - M 16 / H 188	50	M 16	17,0	29	42,5	188	150	•
8720	BT 50 - M 16 / H 254	50	M 16	17,0	29	44	254	216	•



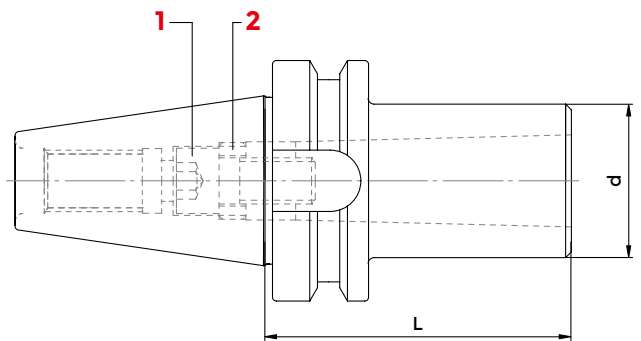
## INDEXABLE MORSE TAPER DRILL HOLDERS



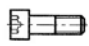


### JIS-B 6339 MAS 403/BT SHAPE A/D - DIN 228-2

COD.	DESCRIPTION	ISO	MORSE	d	L	G6.3 8000
8346	BT 30 - CM 1 PUNTE	30	1	25	50	•
3796	BT 30 - CM 2 PUNTE	30	2	32	60	•
3883	BT 30 - CM 3 PUNTE	30	3	40	80	•
212-41501	BT 40 - CM 1 PUNTE	40	1	25	50	•
212-41502	BT 40 - CM 2 PUNTE	40	2	32	60	•
212-41503	BT 40 - CM 3 PUNTE	40	3	40	75	•
212-41504	BT 40 - CM 4 PUNTE	40	4	48	95	•
212-41519	BT 50 - CM 1 PUNTE	50	1	25	45	•
212-41505	BT 50 - CM 2 PUNTE	50	2	32	60	•
212-41506	BT 50 - CM 3 PUNTE	50	3	40	65	•
212-41507	BT 50 - CM 4 PUNTE	50	4	48	95	•
212-41508	BT 50 - CM 5 PUNTE	50	5	63	105	•

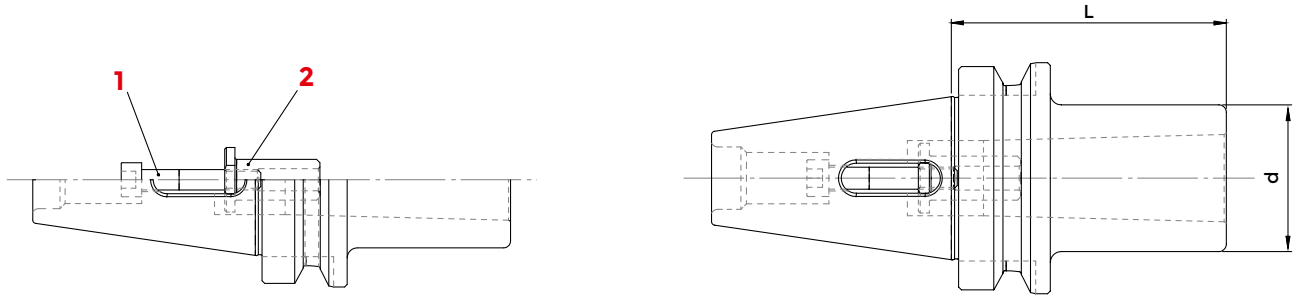
## END MILL HOLDERS FOR MORSE TAPER CUTTERS




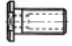
### JIS-B 6339 MAS 403/BT SHAPE A - DIN 228-2

COD.	DESCRIPTION	ISO	MORSE	d	L	G6.3 8000	1	2	WRENCH
							SCREW	LEFT NUT	
3884	BT 30 - CM 3 FRESE	30	3	40	80	•			
212-21502	BT 40 - CM 2 FRESE	40	2	32	50	•	7402	811-302032	816-20206002
212-21503	BT 40 - CM 3 FRESE	40	3	40	75	•	811-111007	811-302031	816-20205002
212-21504	BT 40 - CM 4 FRESE	40	4	48	95	•	7403	811-302032	816-20206002
3801	BT 50 - CM 2 FRESE	50	2	32	50	•	7404	811-302036	816-20207002
212-21506	BT 50 - CM 3 FRESE	50	3	40	65	•	811-111007	811-302031	816-20205002
212-21507	BT 50 - CM 4 FRESE	50	4	48	95	•	7403	811-302032	816-20206002
3891	BT 50 - CM 5 FRESE	50	5	63	120	•	7407	811-302036	816-20207002
							7408	811-302034	816-20208002

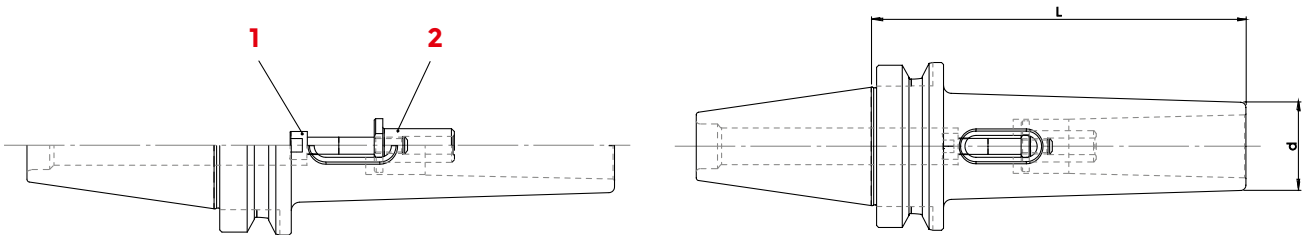
**COMBI MORSE TAPER HOLDERS FOR DRILLS AND MILLING CUTTERS**




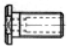
**JIS-B 6339 MAS 403/BT SHAPE A - DIN 228-2**

COD.	DESCRIPTION	ISO	MORSE	d	L	G6.3 8000	1	2
							SCREW	REDUCER
								
212-61518	BT 40 - CM 1 P+ F	40	1	25	50	•	7400	-
212-61519	BT 40 - CM 2 P+ F	40	2	32	60	•	7401	-
212-61520	BT 40 - CM 3 P+ F	40	3	40	75	•	7400	811-302006
3790	BT 50 - CM 1 P+ F	50	1	25	45	•	7400	-
212-61523	BT 50 - CM 2 P+ F	50	2	32	60	•	7405	-
212-61524	BT 50 - CM 3 P+ F	50	3	40	65	•	811-101070	-
212-61525	BT 50 - CM 4 P+ F	50	4	48	95	•	7409	-

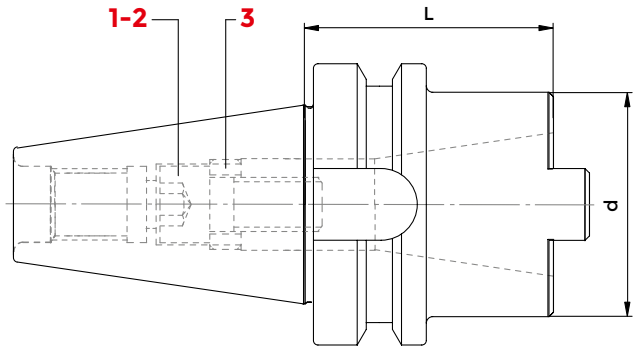
**COMBI MORSE TAPER HOLDERS FOR DRILLS AND MILLING CUTTERS**



**JIS-B 6339 MAS 403/BT SHAPE A - DIN 228-2**

COD. DRILLS	COD. DRILLS + MILLING CUTTERS	DESCRIPTION	ISO	MORSE	d	L	G6.3 8000	1	2
								SCREW	REDUCER
									
8348	4258	BT 40 - CM 1	40	1	18	115	•	7400	-
8350	212-61502	BT 40 - CM 2	40	2	25	120	•	7401	-
8351	212-61503	BT 40 - CM 3	40	3	33	140	•	7400	811-302006
4261	-	BT 40 - CM 4	40	4	40	165	•	-	-
8353	212-61505	BT 50 - CM 1	50	1	18	120	•	7400	-
8355	212-61506	BT 50 - CM 2	50	2	25	140	•	7405	-
8357	212-61507	BT 50 - CM 3	50	3	33	150	•	811-101070	-
8358	212-61508	BT 50 - CM 4	50	4	40	180	•	7409	-
8359	-	BT 50 - CM 5	50	5	55	220	•	-	-

## ADAPTER FROM BT TO NT/SK/BT

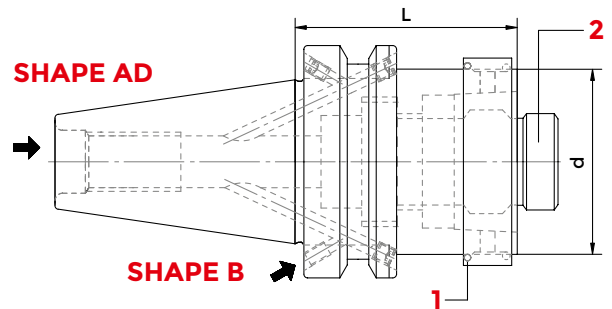


### JIS-B 6339 MAS 403/BT SHAPE A - MAS403BT

COD.	DESCRIPTION	ISO	d	L	G6,3 8000	1	2	3	WRENCH
						SCREW DIN 2080	SCREW BT DIN 69871	NUT	
212-11504	BT 40 - ISO 30 / TC 30 / BT 30	30	50	70	•				
212-11508	BT 40 - ISO 40 / TC 40 / BT 40	40	68	100	•	*811-401147	*811-401150	*811-302036	816-20207002
212-11507	BT 50 - ISO 40 / TC 40 / BT 40	40	78	70	•	*811-401147	*811-401150	*811-302036	816-20207002
212-11509	BT 50 - ISO 50 / TC 50 / BT 50	50	100	120	•	*811-401151	*811-401152	*811-302047	816-202090

\*included in delivery

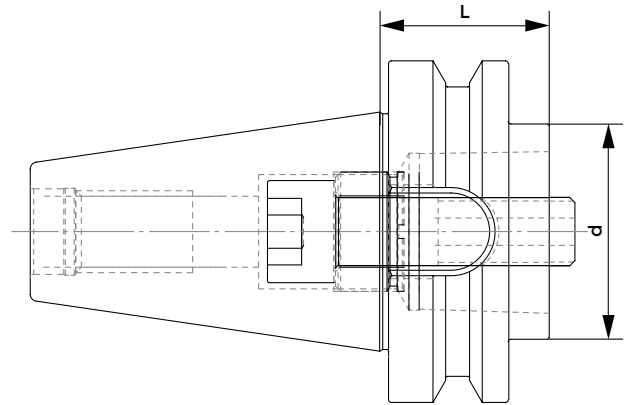
## ADAPTER FROM BT TO DIN69893-1 (HSK A+C)



### JIS-B 6339 MAS 403/BT SHAPE AD/B

COD.	DESCRIPTION	ISO	d	L	G6,3 8000	1	2
						LOCKING RING	CLAMPING UNIT
212-91402	BT 40 - HSK 63 A+C	40	63	80	•	H63A-AN	H63A-UBL
212-91404	BT 50 - HSK 63 A+C	50	63	70	•	H63A-AN	H63A-UBL

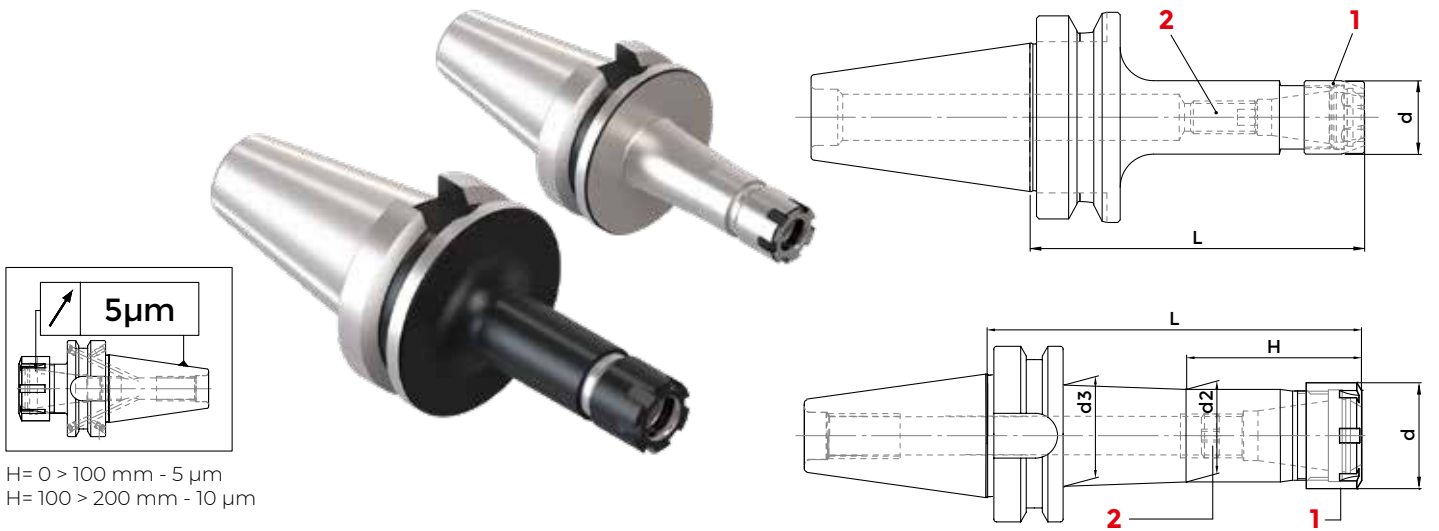
**ADAPTER FROM BT TO ISO26623-1 (POLYGONAL)**



**JIS-B 6339 MAS 403/BT SHAPE AD/B - MAS403BT**

COD.	DESCRIPTION	ISO	d	L	G6.3 8000
BT40H75C63ADB	BT 40 - C 63 / H 75	40	63	75	•
BT50H70C40ADB	BT 50 - C 40 / H 70	50	40	70	•
BT50H90C63ADB	BT 50 - C 63 / H 90	50	63	90	•

## ER COLLET CHUCK WITH MINI NUT



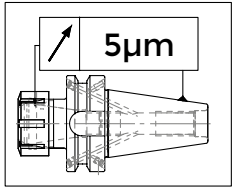
H= 0 > 100 mm - 5 µm  
H= 100 > 200 mm - 10 µm

### JIS-B 6339 MAS 403/BT AD/B - DIN 6358

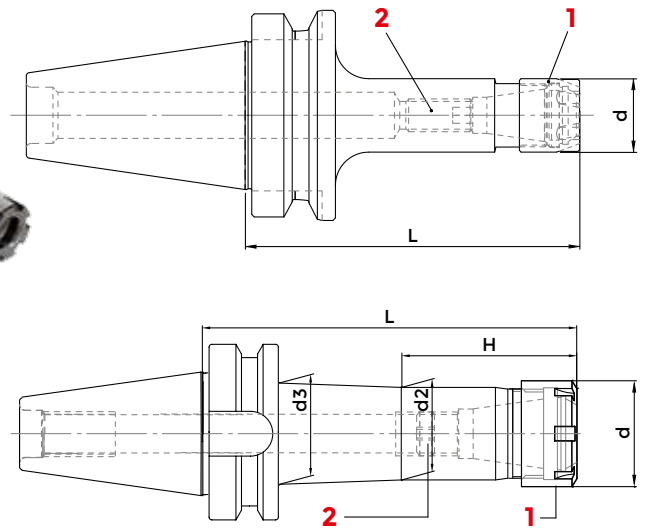
COD. (AD)	COD. (AD+B)	DESCRIPTION	ISO	ER	d	d2	d3	L	H	G6,3 12000	G6,3 15000	1		2	
												NUT	SCREW	WRENCH	COLLET
214-91448	-	BT 30 - ER 11 GM /H 70 SLIM LINE	30	ER111:8	16	16	19	70	20	-	•	812-203012	811-102114	816-203008	ER11
9655	-	BT 30 - ER 11 GM /H 100 SLIM LINE	30	ER111:8	16	14	20	100	20	-	•	812-203012	811-102114	816-203008	ER11
214-31596	-	BT 30 - ER 16 GM /H 80 SLIM LINE	30	ER161:12	22	22	-	80	-	-	•	812-203013	811-102114	816-203009	ER16
3454	-	BT 30 - ER 16 GM /H 120 SLIM LINE	30	ER161:12	22	22	-	120	-	-	•	812-203013	811-102114	816-203009	ER16
214-91433	4855	BT 40 - ER 11 GM /H 70 SLIM LINE	40	ER111:8	16	14	20	70	20	-	•	812-203012	811-102114	816-203008	ER11
214-91434	4856	BT 40 - ER 11 GM /H 100 SLIM LINE	40	ER111:8	16	14	20	100	40	-	•	812-203012	811-102114	816-203008	ER11
3272	4857	BT 40 - ER 11 GM /H 130 SLIM LINE	40	ER111:8	16	16	-	130	-	-	•	812-203012	811-102114	816-203008	ER11
214-91435	4858	BT 40 - ER 11 GM /H 160 SLIM LINE	40	ER111:8	16	14	27	160	50	-	•	812-203012	811-102114	816-203008	ER11
214-91436	4859	BT 40 - ER 16 GM /H 70 SLIM LINE	40	ER161:12	22	22	25	70	27	-	•	812-203013	811-102030	816-203009	ER16
214-91437	4860	BT 40 - ER 16 GM /H 100 SLIM LINE	40	ER161:12	22	22	26	100	47	-	•	812-203013	811-102030	816-203009	ER16
3457	4861	BT 40 - ER 16 GM /H 130 SLIM LINE	40	ER161:12	22	22	-	130	-	-	•	812-203013	811-102030	816-203009	ER16
214-91438	4862	BT 40 - ER 16 GM /H 160 SLIM LINE	40	ER161:12	22	22	26	160	97	-	•	812-203013	811-102030	816-203009	ER16
4781	4812	BT 40 - ER 16 GM /H 200 SLIM LINE	40	ER161:12	22	22	-	200	-	-	•	812-203013	811-102030	816-203009	ER16
214-91450	4501	BT 40 - ER 20 GM /H 70 SLIM LINE	40	ER201:15	28	27	-	70	-	-	•	812-203014	4973	816-203010	ER20
214-91451	4863	BT 40 - ER 20 GM /H 100 SLIM LINE	40	ER201:15	28	27	30	100	48	-	•	812-203014	4973	816-203010	ER20
3458	4864	BT 40 - ER 20 GM /H 130 SLIM LINE	40	ER201:15	28	27	-	130	-	-	•	812-203014	4973	816-203010	ER20
214-91452	4865	BT 40 - ER 20 GM /H 160 SLIM LINE	40	ER201:15	28	27	31	160	98	-	•	812-203014	4973	816-203010	ER20
4782	4813	BT 40 - ER 20 GM /H 200 SLIM LINE	40	ER201:15	28	27	-	200	-	-	•	812-203014	4973	816-203010	ER20
214-91439	4656	BT 40 - ER 25 GM /H 70 SLIM LINE	40	ER251:20	35	33	-	70	-	-	•	812-203015	0190	816-203011	ER25
214-91440	4866	BT 40 - ER 25 GM /H 100 SLIM LINE	40	ER251:20	35	33	-	100	-	-	•	812-203015	0190	816-203011	ER25
4690	4867	BT 40 - ER 25 GM /H 130 SLIM LINE	40	ER251:20	35	33	-	130	-	-	•	812-203015	0190	816-203011	ER25
214-91441	4868	BT 40 - ER 25 GM /H 160 SLIM LINE	40	ER251:20	35	33	33	160	103	-	•	812-203015	0190	816-203011	ER25
3460	4814	BT 40 - ER 25 GM /H 200 SLIM LINE	40	ER251:20	35	33	-	200	-	-	•	812-203015	0190	816-203011	ER25
214-91443	-	BT 50 - ER 16 GM /H 100 SLIM LINE	50	ER161:12	22	22	26	100	47	•	-	812-203013	811-102030	816-203009	ER16
3463	4869	BT 50 - ER 16 GM /H 130 SLIM LINE	50	ER161:12	22	22	-	130	-	•	-	812-203013	811-102030	816-203009	ER16

follows >>

## ER COLLET CHUCK WITH MINI NUT



H= 0 > 100 mm - 5 µm  
H= 100 > 200 mm - 10 µm



### JIS-B 6339 MAS 403/BT AD/B - DIN 6358

COD. (AD)	COD. (AD+B)	DESCRIPTION	ISO	ER	d	d2	d3	L	H	G6,3 12000	G6,3 15000	1		2	
												NUT	SCREW	WRENCH	COLLET
214-91444	4833	BT 50 - ER 16 GM /H 160 SLIM LINE	50	ER 161:12	22	22	28	160	97	•	-	812-203013	811-102030	816-203009	ER16
3495	4834	BT 50 - ER 16 GM /H 200 SLIM LINE	50	ER 161:12	22	22	-	200	-	•	-	812-203013	811-102030	816-203009	ER16
3464	4870	BT 50 - ER 20 GM /H 130 SLIM LINE	50	ER 201:15	28	27	-	130	-	•	-	812-203014	4973	816-203010	ER20
214-91455	4657	BT 50 - ER 20 GM /H 160 SLIM LINE	50	ER 201:15	28	27	-	160	-	•	-	812-203014	4973	816-203010	ER20
3048	4658	BT 50 - ER 20 GM /H 200 SLIM LINE	50	ER 201:15	28	27	-	200	-	•	-	812-203014	4973	816-203010	ER20
3051	4659	BT 50 - ER 25 GM /H 130 SLIM LINE	50	ER 251:20	35	34	-	130	-	•	-	812-203015	0190	816-203011	ER25
214-91447	4871	BT 50 - ER 25 GM /H 160 SLIM LINE	50	ER 251:20	35	34	40	160	108	•	-	812-203015	0190	816-203011	ER25
3061	4660	BT 50 - ER 25 GM /H 200 SLIM LINE	50	ER 251:20	35	34	-	200	-	•	-	812-203015	0190	816-203011	ER25

#### ACCESSORIES

p. 632



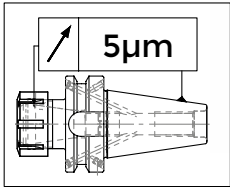
p. 615



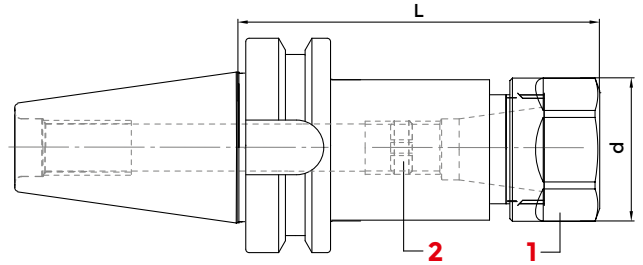
p. 635



## ER COLLET CHUCK WITH HEXAGONAL NUT



H= 0 > 100 mm - 5 µm  
H= 100 > 200 mm - 10 µm



### JIS-B 6339 MAS 403/BT A - DIN 6358

COD. (AD)	COD. (AD+B)	DESCRIPTION	ISO	ER	d	L	G6,3 15000	1	2	WRENCH	COLLET
								NUT	SCREW		
214-31511EXA	-	BT 30 - ER 16 GE / H 55	30	ER 16 1÷12	28	55	•				
214-31520EXA	-	BT 30 - ER 16 GE / H 100	30	ER 16 1÷12	28	100	•				
8086	-	BT 30 - ER 20 GE / H 55	30	ER 20 1÷15	34	55	•				
8087	-	BT 30 - ER 20 GE / H 100	30	ER 20 1÷15	34	100	•				
3447	4843	BT 40 - ER 11 GE / H 70	40	ER 11 1÷ 8	19	70	•				
3448	4844	BT 40 - ER 11 GE / H 100	40	ER 11 1÷ 8	19	100	•				
3449	4845	BT 40 - ER 11 GE / H 130	40	ER 11 1÷ 8	19	130	•				
3450	4846	BT 40 - ER 11 GE / H 160	40	ER 11 1÷ 8	19	160	•				
214-31539EXA	8104	BT 40 - ER 16 GE / H 70	40	ER 16 1÷12	28	70	•				
214-31527EXA	8105	BT 40 - ER 16 GE / H 100	40	ER 16 1÷12	28	100	•				
8090	8106	BT 40 - ER 16 GE / H 130	40	ER 16 1÷12	28	130	•				
214-31442EXA	8107	BT 40 - ER 16 GE / H 160	40	ER 16 1÷12	28	160	•				
8092	-	BT 40 - ER 16 GE / H 200	40	ER 16 1÷12	28	200	•				
8093	8109	BT 40 - ER 20 GE / H 70	40	ER 20 1÷15	34	70	•				
8094	8110	BT 40 - ER 20 GE / H 100	40	ER 20 1÷15	34	100	•				
8095	8111	BT 40 - ER 20 GE / H 130	40	ER 20 1÷15	34	130	•				
8096	8112	BT 40 - ER 20 GE / H 160	40	ER 20 1÷15	34	160	•				
8097	-	BT 40 - ER 20 GE / H 200	40	ER 20 1÷15	34	200	•				

#### ACCESSORIES

p. 633



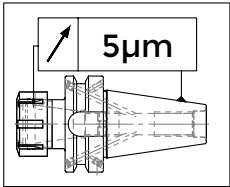
p. 615



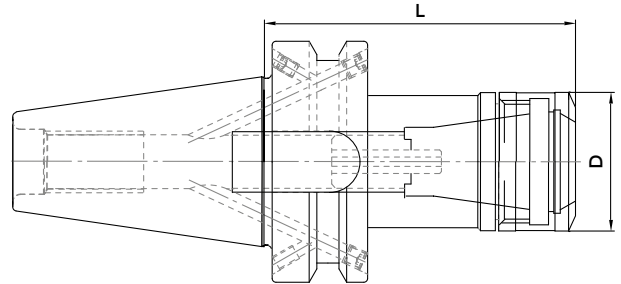
p. 636



## ER COLLET CHUCKS - HIGH PRECISION



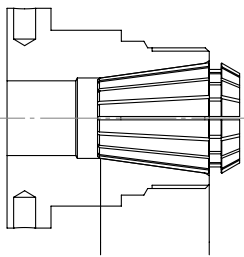
H= 0 > 100 mm - 5 µm  
H= 100 > 200 mm - 10 µm



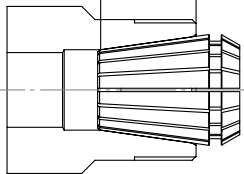
### MAS BT AD+B - DIN 6499

COD.	DESCRIPTION	ISO	L	D	ER	G2.5 30000	NUT	WRENCH
214-91473*	BT30H70ER16-HP	30	70	30	16	•	812-203085	816-203069
214-91474*	BT30H70ER25-HP	30	70	40	25	•	812-203086	816-203070
214-91475*	BT30H70ER32-HP	30	70	50	32	•	812-203087	816-203071
214-91462	BT40H70ER16-HP	40	70	30	16	•	812-203085	816-203069
214-91463	BT40H70ER25-HP	40	70	40	25	•	812-203086	816-203070
214-91464	BT40H70ER32-HP	40	70	50	32	•	812-203087	816-203071
214-91467	BT40H100ER16-HP	40	100	30	16	•	812-203085	816-203069
214-91469	BT40H100ER25-HP	40	100	40	25	•	812-203086	816-203070
214-91470	BT40H100ER32-HP	40	100	50	32	•	812-203087	816-203071
214-91465	BT50H80ER16-HP	50	80	30	16	•	812-203085	816-203069
214-91471	BT50H100ER16-HP	50	100	30	16	•	812-203085	816-203069
214-91472	BT50H100ER32-HP	50	100	50	32	•	812-203087	816-203071

\* for BT30, AD shape only



**HIGH  
PRECISION LINE**



**STANDARD**



**Kit:**  
· 1 holder  
· 10 collets

COD.	DESCRIPTION
KIT BT40 ER16 HP	BT40 ER16 H70 HP
KIT BT40 ER25 HP	BT40 ER25 H70 HP
KIT BT40 ER32 HP	BT40 ER32 H70 HP

**ACCESSORIES**

p. 153



p. 615

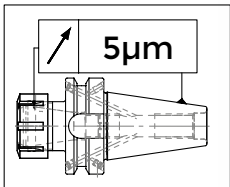


p. 153

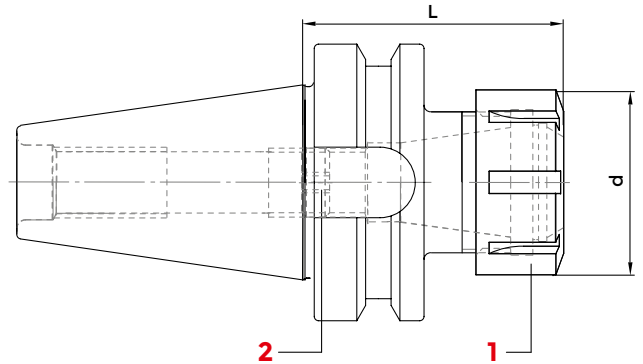




## ER COLLET CHUCKS



H= 0 > 100 mm - 5 µm  
H= 100 > 200 mm - 10 µm

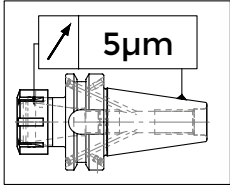


### JIS-B 6339 MAS 403/BT AD - DIN 6499/ISO15488

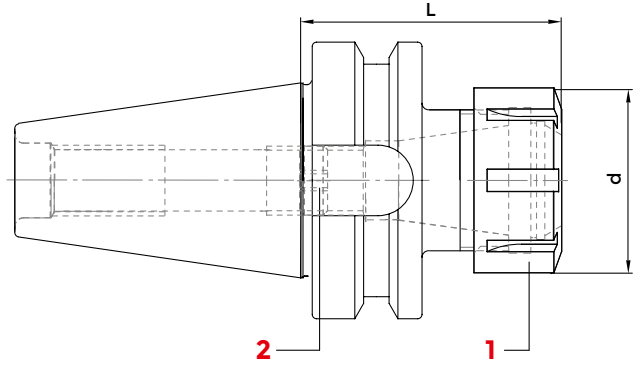
COD. (AD)	COD. (AD+B)	DESCRIPTION	ISO	ER	d	L	G6,3 12000	G6,3 15000	1	2	WRENCH	COLLET
									NUT	SCREW		
214-31511	-	BT 30 - ER16 / H 55	30	ER 16 1÷12	32	55	-	•				
214-31520	-	BT 30 - ER16 / H 100	30	ER 16 1÷12	32	100	-	•	812-203005	811-102030	816-203000	ER16
214-31585	-	BT 30 - ER20 / H 55	30	ER 20 1÷15	35	55	-	•	812-203006	811-102030	816-203005	ER20
214-31573	-	BT 30 - ER20 / H 100	30	ER 20 1÷15	35	100	-	•	812-203006	811-102030	816-203005	ER20
214-31512	-	BT 30 - ER25 / H 55	30	ER 25 1÷20	42	55	-	•	812-203001	0190	816-203001	ER25
214-31538	-	BT 30 - ER25 / H 100	30	ER 25 1÷20	42	100	-	•	812-203001	0190	816-203001	ER25
214-31525	-	BT 30 - ER32 / H 60	30	ER 32 2÷25	50	60	-	•	812-203002	0190	816-203002	ER32
3252	-	BT 30 - ER32 / H 100	30	ER 32 2÷25	50	100	-	•	812-203002	0190	816-203002	ER32
214-31539	214-31447	BT 40 - ER16 / H 70	40	ER 16 1÷12	32	70	-	•	812-203005	811-102038	816-203000	ER16
214-31527	214-31448	BT 40 - ER16 / H 100	40	ER 16 1÷12	32	100	-	•	812-203005	811-102038	816-203000	ER16
214-31477	4847	BT 40 - ER16 / H 130	40	ER 16 1÷12	32	130	-	•	812-203005	811-102038	816-203000	ER16
214-31442	4874	BT 40 - ER16 / H 160	40	ER 16 1÷12	32	160	-	•	812-203005	811-102038	816-203000	ER16
214-31454	4852	BT 40 - ER16 / H 200	40	ER 16 1÷12	32	200	-	•	812-203005	811-102038	816-203000	ER16
214-31555	214-31474	BT 40 - ER20 / H 70	40	ER 20 1÷15	35	70	-	•	812-203006	4973	816-203005	ER20
214-31556	214-31475	BT 40 - ER20 / H 100	40	ER 20 1÷15	35	100	-	•	812-203006	4973	816-203005	ER20
214-31478	4853	BT 40 - ER20 / H 130	40	ER 20 1÷15	35	130	-	•	812-203006	4973	816-203005	ER20
3114	4877	BT 40 - ER20 / H 160	40	ER 20 1÷15	35	160	-	•	812-203006	4973	816-203005	ER20
3499	4854	BT 40 - ER20 / H 200	40	ER 20 1÷15	35	200	-	•	812-203006	4973	816-203005	ER20
214-31501	214-31422	BT 40 - ER25 / H 70	40	ER 25 1÷20	42	70	-	•	812-203001	0190	816-203001	ER25
214-31542	214-31439	BT 40 - ER25 / H 100	40	ER 25 1÷20	42	100	-	•	812-203001	0190	816-203001	ER25
214-31479	4880	BT 40 - ER25 / H 130	40	ER 25 1÷20	42	130	-	•	812-203001	0190	816-203001	ER25
214-31432	BT40H160ER25ADB	BT 40 - ER25 / H 160	40	ER 25 1÷20	42	160	-	•	812-203001	0190	816-203001	ER25
214-31455	4811	BT 40 - ER25 / H 200	40	ER 25 1÷20	42	200	-	•	812-203001	0190	816-203001	ER25
214-31502	214-31423	BT 40 - ER32 / H 70	40	ER 32 2÷25	50	70	-	•	812-203002	811-303118	816-203002	ER32
214-31545	214-31440	BT 40 - ER32 / H 100	40	ER 32 2÷25	50	100	-	•	812-203002	811-303118	816-203002	ER32
214-31480	4884	BT 40 - ER32 / H 130	40	ER 32 2÷25	50	130	-	•	812-203002	811-303118	816-203002	ER32
214-31433	4885	BT 40 - ER32 / H 160	40	ER 32 2÷25	50	160	-	•	812-203002	811-303118	816-203002	ER32
214-31456	4886	BT 40 - ER32 / H 200	40	ER 32 2÷25	50	200	-	•	812-203002	811-303118	816-203002	ER32
214-31515	214-31424	BT 40 - ER40 / H 70	40	ER 40 3÷32	63	70	-	•	812-203003	0195	816-203003	ER40
214-31583	214-31449	BT 40 - ER40 / H 100	40	ER 40 3÷32	63	100	-	•	812-203003	0195	816-203003	ER40

follows >>

## ER COLLET CHUCKS



H= 0 > 100 mm - 5 µm  
H= 100 > 200 mm - 10 µm



### JIS-B 6339 MAS 403/BT AD - DIN 6499/ISO15488

COD. (AD)	COD. (AD+B)	DESCRIPTION	ISO	ER	d	L	G6,3 12000	G6,3 15000	1		2	
									NUT	SCREW	WRENCH	COLLET
214-31481	4889	BT 40 - ER40 / H 130	40	ER 40 3÷32	63	130	-	•				
214-31451	4890	BT 40 - ER40 / H 160	40	ER 40 3÷32	63	160	-	•	812-203003	0195	816-203003	ER40
214-31457	4891	BT 40 - ER40 / H 200	40	ER 40 3÷32	63	200	-	•	812-203003	0195	816-203003	ER40
3265	4931	BT 40 - ER50 / H 85	40	ER 50 6÷36	78	85	-	•	812-203007	0195	816-203004	ER50
9008	-	BT 50 - ER16 / H 80	50	ER 16 1÷12	32	80	•	-	812-203005	811-102038	816-203000	ER16
214-31450	4892	BT 50 - ER16 / H 100	50	ER 16 1÷12	32	100	•	-	812-203005	811-102038	816-203000	ER16
214-31452	4893	BT 50 - ER16 / H 160	50	ER 16 1÷12	32	160	•	-	812-203005	811-102038	816-203000	ER16
214-31458	4957	BT 50 - ER16 / H 200	50	ER 16 1÷12	32	200	•	-	812-203005	811-102038	816-203000	ER16
3119	4894	BT 50 - ER20 / H 100	50	ER 20 1÷15	35	100	•	-	812-203006	4973	816-203005	ER20
3120	4895	BT 50 - ER20 / H 160	50	ER 20 1÷15	35	160	•	-	812-203006	4973	816-203005	ER20
214-31549	214-31429	BT 50 - ER25 / H 80	50	ER 25 1÷20	42	80	•	-	812-203001	0190	816-203001	ER25
214-31438	4897	BT 50 - ER25 / H 100	50	ER 25 1÷20	42	100	•	-	812-203001	0190	816-203001	ER25
214-31453	4898	BT 50 - ER25 / H 160	50	ER 25 1÷20	42	160	•	-	812-203001	0190	816-203001	ER25
214-31459	4959	BT 50 - ER25 / H 200	50	ER 25 1÷20	42	200	•	-	812-203001	0190	816-203001	ER25
214-31503	214-31430	BT 50 - ER32 / H 80	50	ER 32 2÷25	50	80	•	-	812-203002	811-303118	816-203002	ER32
214-31434	4900	BT 50 - ER32 / H 100	50	ER 32 2÷25	50	100	•	-	812-203002	811-303118	816-203002	ER32
BT50H130ER32AD4901		BT 50 - ER32 / H 130	50	ER 32 2÷25	50	130	•	-	812-203002	811-303118	816-203002	ER32
214-31435	4902	BT 50 - ER32 / H 160	50	ER 32 2÷25	50	160	•	-	812-203002	811-303118	816-203002	ER32
214-31460	4903	BT 50 - ER32 / H 200	50	ER 32 2÷25	50	200	•	-	812-203002	811-303118	816-203002	ER32
3400	4961	BT 50 - ER32 / H 250	50	ER 32 2÷25	50	250	•	-	812-203002	811-303118	816-203002	ER32
214-31504	214-31431	BT 50 - ER40 / H 80	50	ER 40 3÷32	63	80	•	-	812-203003	0195	816-203003	ER40
214-31436	4905	BT 50 - ER40 / H 100	50	ER 40 3÷32	63	100	•	-	812-203003	0195	816-203003	ER40
214-31510	4906	BT 50 - ER40 / H 130	50	ER 40 3÷32	63	130	•	-	812-203003	0195	816-203003	ER40
214-31437	4907	BT 50 - ER40 / H 160	50	ER 40 3÷32	63	160	•	-	812-203003	0195	816-203003	ER40
214-31461	4908	BT 50 - ER40 / H 200	50	ER 40 3÷32	63	200	•	-	812-203003	0195	816-203003	ER40
3473	4999	BT 50 - ER50 / H 100	50	ER 50 6÷36	78	100	•	-	812-203007	0195	816-203004	ER50
8046	8047	BT 50 - ER50 / H 160	50	ER 50 6÷36	78	160	•	-	812-203007	0195	816-203004	ER50

#### ACCESSORIES

p. 633



p. 615







p. 636







## EQUIPMENT CASE WITH REDUCED SET OF ER COLLETS, AD SHAPE COLLET CHUCK AND WRENCH



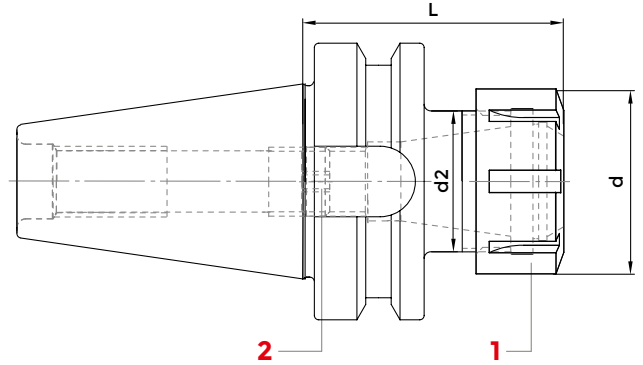
COD.	DESCRIPTION	ISO	CHUCK	CASE	WRENCH	COLLET
						
7784	KIT Rid BT 30 / H 55 - ER 25	30	214-31512	7022	816-203001	ER25: Ø 4 - 6 - 8 -10 -12 -16
7785	KIT Rid BT 30 / H 60 - ER 32	30	214-31525	7023	816-203002	ER32: Ø 4 - 6 - 8 -10 -12 -16 - 20
7786	KIT Rid BT 40 / H 70 - ER 25	40	214-31501	7022	816-203001	ER25: Ø 4 - 6 - 8 -10 -12 -16
7787	KIT Rid BT 40 / H 70 - ER 32	40	214-31502	7023	816-203002	ER32: Ø 4 - 6 - 8 -10 -12 -16 - 20
7788	KIT Rid BT 40 / H 70 - ER 40	40	214-31515	7024	816-203003	ER40: Ø 4 - 6 - 8 -10 -12 -16 - 20 -25
7789	KIT Rid BT 50 / H 80 - ER 32	50	214-31503	7023	816-203002	ER32: Ø 4 - 6 - 8 -10 -12 -16 - 20
7790	KIT Rid BT 50 / H 80 - ER 40	50	214-31504	7024	816-203003	ER40: Ø 4 - 6 - 8 -10 -12 -16 - 20 -25

## EQUIPMENT CASE WITH COMPLETE SET OF ER COLLETS, AD SHAPE COLLET CHUCK AND WRENCH



COD.	DESCRIPTION	ISO	CHUCK	CASE	WRENCH	COLLET
						
7791	KIT BT 30 / H 55 - ER 25	30	214-31512	7022	816-203001	ER25: Ø 2 ÷ 16 (15 Pinze)
7792	KIT BT 30 / H 60 - ER 32	30	214-31525	7023	816-203002	ER32: Ø 3 ÷ 20 (18 Pinze)
7793	KIT BT 40 / H 70 - ER 25	40	214-31501	7022	816-203001	ER25: Ø 2 ÷ 16 (15 Pinze)
7794	KIT BT 40 / H 70 - ER 32	40	214-31502	7023	816-203002	ER32: Ø 3 ÷ 20 (18 Pinze)
7795	KIT BT 40 / H 70 - ER 40	40	214-31515	7024	816-203003	ER40: Ø 4 ÷ 26 (23 Pinze)
7796	KIT BT 50 / H 80 - ER 32	50	214-31503	7023	816-203002	ER32: Ø 3 ÷ 20 (18 Pinze)
7797	KIT BT 50 / H 80 - ER 40	50	214-31504	7024	816-203003	ER40: Ø 4 ÷ 26 (23 Pinze)

**ER COLLET CHUCKS - HIGH SPEED LINE**



**JIS-B 6339 MAS 403/BT AD - DIN6499/ISO15488**

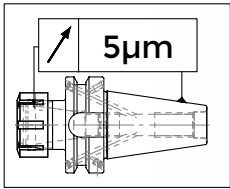
**HIGH SPEED LINE**

COD.	DESCRIPTION	ISO	ER	d	d2	L	G2,5 30000	2
								SCREW
214-91458	BT30H60ER16	30	16	32	22	60	•	811-102030
214-91459	BT30H60ER20	30	20	35	25	60	•	811-102030
214-91460	BT30H60ER25	30	25	42	32	60	•	0190
214-91461	BT30H60ER32	30	32	50	40	60	•	0190
214-91401	BT40H70ER16	40	16	32	22	70	•	811-102030
214-91408	BT40H100ER16	40	16	32	31.5	100	•	811-102030
214-91402	BT40H70ER25	40	25	42	32	70	•	0190
214-91409	BT40H100ER25	40	25	42	41.5	100	•	0190
214-91403	BT40H70ER32	40	32	50	40	70	•	0190
214-91410	BT40H100ER32	40	32	50	49.5	100	•	0190
214-91406	BT50H80ER32	50	32	50	40	80	•	0190

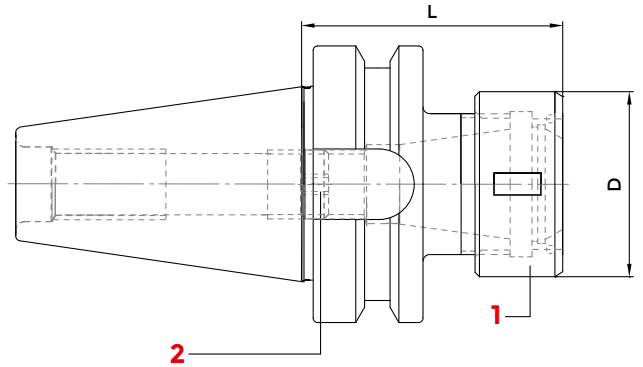
ACCESSORIES



## DIN6388 (EOC) COLLET CHUCKS



H= 0 > 100 mm - 5 µm  
H= 100 > 200 mm - 10 µm



### JIS-B 6339 MAS 403/BT AD - DIN 6388

COD.	DESCRIPTION	ISO	EOC	d	L	G6.3 12000	G6.3 15000	1	2	
								NUT	WRENCH	COLLET
8726	BT 40 - EOC 16 / H 70	40	EOC 16 2÷16	43	70	-	•			
8729	BT 40 - EOC 25 / H 70	40	EOC 25 2÷25	60	70	-	•	GOC25	816-203034	EOC25
8732	BT 40 - EOC 32 / H 80	40	EOC 32 3÷32	72	80	-	•	GOC32	816-203036	EOC32
8735	BT 50 - EOC 25 / H 85	50	EOC 25 2÷25	60	85	•	-	GOC25	816-203034	EOC25
8738	BT 50 - EOC 32 / H 95	50	EOC 32 3÷32	72	95	•	-	GOC32	816-203036	EOC32
8739	BT 50 - EOC 32 / H 130	50	EOC 32 3÷32	72	130	•	-	GOC32	816-203036	EOC32

#### ACCESSORIES

p. 687



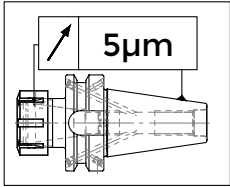
p. 686



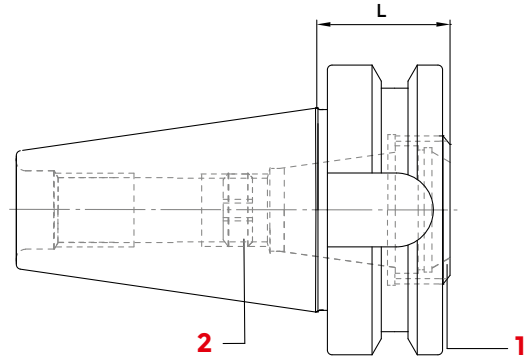
p. 637



## ER SHORT COLLET CHUCK WITH INNER NUT



H= 0 > 100 mm - 5 µm  
H= 100 > 200 mm - 10 µm



### JIS-B 6339 MAS 403/BT AD - MAS 403/BT A

COD.	DESCRIPTION	ISO	L	ER	G6.3 12000	G6.3 15000	1	2	
							NUT	WRENCH	COLLET
214-31462	BT 40 - ER 25 GA	40	29	ER 25 1±20	-	•			
214-31571	BT 40 - ER 32 GA	40	29	ER 32 2±25	-	•	812-203057	CHER25EX	ER25
214-31463	BT 50 - ER 32 GA	50	40	ER 32 2±25	•	-	812-203032	CHER32EX	ER32
							812-203032	CHER32EX	ER32

ACCESSORIES

p. 634



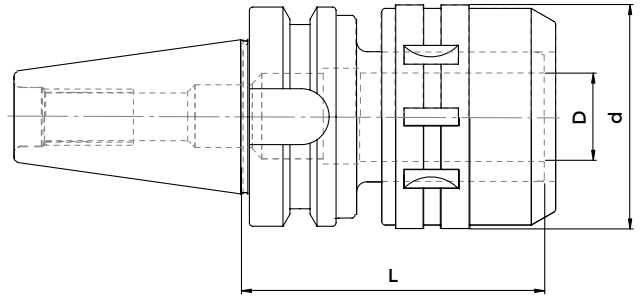
p. 615




p. 634



## MILLING CHUCK

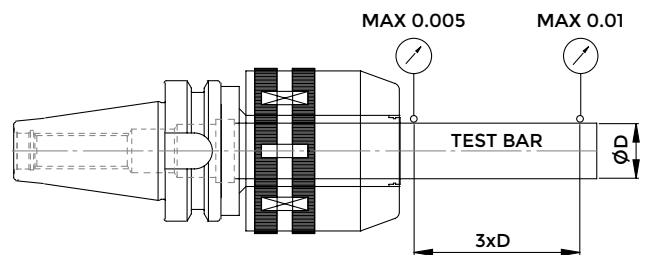


### JIS-B 6339 MAS 403/BT AD

COD. (AD)	COD. (AD+B)	DESCRIPTION	ISO	D	L	d	G6.3 12000	COLLET
								
214-01508	214-01601	BT 40 - PC 20 / H 80	40	20	80	54	•	OGX20
214-01501	-	BT 40 - PC 20 / H 105	40	20	105	54	•	OGX20
-	214-01602	BT 40 - PC 32 / H 85	40	32	85	63	•	OGX32
214-01502	-	BT 40 - PC 32 / H 105	40	32	105	72	•	OGX32
5133	9650	BT 40 - PC 32 / H 135	40	32	135	63	•	OGX32
214-01504	9651	BT 50 - PC 20 / H 105	50	20	105	54	•	OGX20
-	9652	BT 50 - PC 20 / H 135	50	20	135	50	•	OGX20
214-01505	9653	BT 50 - PC 32 / H 105	50	32	105	72	•	OGX32
214-01506	9654	BT 50 - PC 32 / H 135	50	32	135	72	•	OGX32

Supplied with wrench

MILLING CHUCK Ø	SPECIFICATION DIN 7178-1	TOLLERANCE	RUN-OUT (3D)	CLAMPING TORQUE
C20	AT3	BT40 (0~+0,003)	0~0,01	980M.m (100Kgf.m)
C32	AT3	BT50 (0~+0,004)	0~0,01	3430M.m (350Kgf.m)







#### ACCESSORIES

p. 688

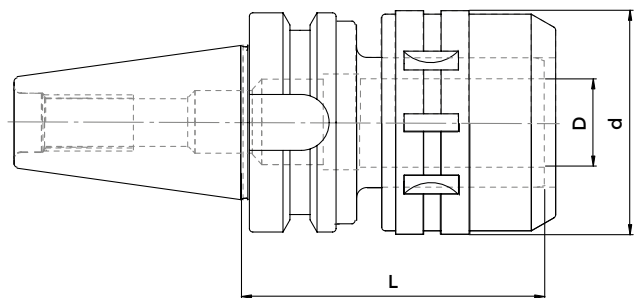


## MILLING CHUCK KIT



COD.	DESCRIPTION	ISO	CHUCK	CASE	WRENCH	COLLET
						
KITBT40C20	KIT BT 40 - PC 20 / H 80	40	214-01508	3695	2900	0809 Ø 6 - 8 - 10 - 12 - 16
KITBT40C20DK	KIT BT 40 - PC 20 / H 105	40	214-01501	3695	2900	0809 Ø 6 - 8 - 10 - 12 - 16
KITBT40C32DK	KIT BT 40 - PC 32 / H 105	40	214-01502	3695	816-203036	0810 Ø 6 - 8 - 10 - 12 - 16 - 20 - 25
KITBT50C20	KIT BT 50 - PC 20 / H 105	50	214-01504	3695	2900	0809 Ø 6 - 8 - 10 - 12 - 16
KITBT50C32	KIT BT 50 - PC 32 / H 105	50	214-01505	3695	816-203036	0810 Ø 6 - 8 - 10 - 12 - 16 - 20 - 25

## MILLING CHUCK - HIGH SPEED LINE



### JIS-B 6339 MAS 403/BT

### HIGH SPEED LINE

COD.	DESCRIPTION	ISO	D	d	L	G6.3 20000
214-01510	BT40H80C20HS	40	20	54	80	•
214-01511	BT40H105C20HS	40	20	54	105	•
214-01513	BT50H105C20HS	50	20	54	105	•
214-01514	BT50H105C32HS	50	32	74	105	•

Supplied with wrench

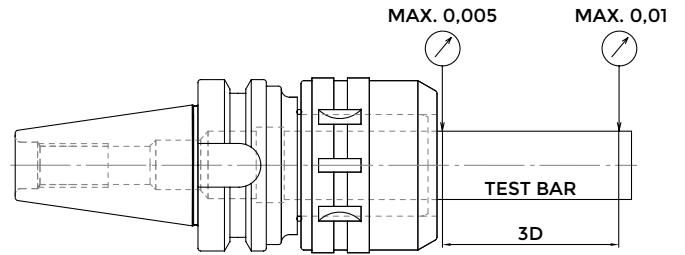
#### ACCESSORIES



p. 688



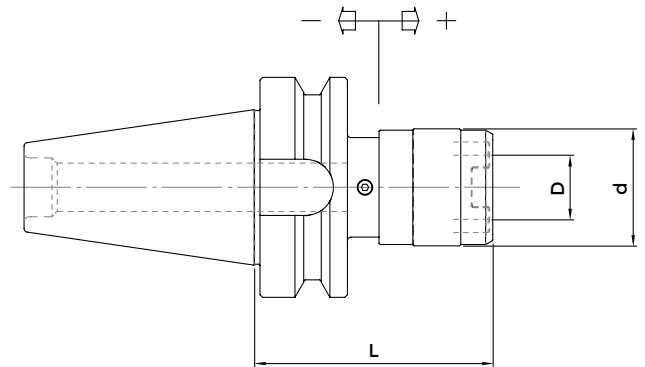
## MILLING CHUCK KIT - HIGH SPEED LINE



### HIGH SPEED LINE

COD.	DESCRIPTION
KIT BT40 C20HS	Nº1 BT40 L90 C20 + nº5 collets K20: Ø6,8,10,12,16
KIT BT40 C32HS	Nº1 BT40 L105 C32 + nº7 collets K32: Ø6,8,10,12,16,20,25

## TENSION/COMPRESSION QUICK CHANGE TAPPING HEADS

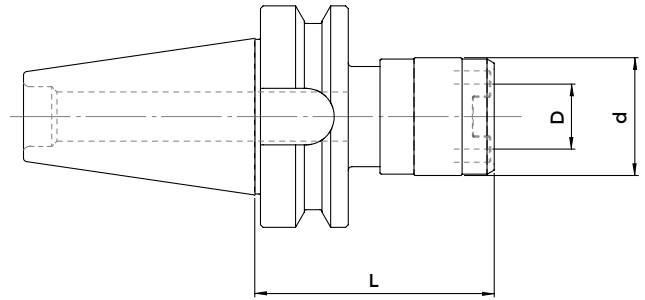


### JIS-B 6339 MAS 403/BT A

COD.	DESCRIPTION	ISO	D	d	L	RANGE	TAP SIZE RANGE
2863	BT 30 - B. 1	30	19	38	63	-7,5 + 7,5	M 3 ÷ M 12 (* M 18 )
2865	BT 30 - B. 2	30	31	55	96	-12,5 + 12,5	M 6 ÷ M 20 (* M 30 )
M3310	BT 40 - B. 1	40	19	38	68	-7,5 + 7,5	M 3 ÷ M 12 (* M 18 )
M3410	BT 40 - B. 2	40	31	55	93	-12,5 + 12,5	M 6 ÷ M 20 (* M 30 )
3526	BT 40 - B. 3	40	48	79	164	-20,0 + 20,0	M 14 ÷ M 33 (* M 48 )
M3320	BT 50 - B. 1	50	19	38	80	-7,5 + 7,5	M 3 ÷ M 12 (* M 18 )
M3430	BT 50 - B. 2	50	31	55	102	-12,5 + 12,5	M 6 ÷ M 20 (* M 30 )
M3530	BT 50 - B. 3	50	48	79	133	-20,0 + 20,0	M 14 ÷ M 33 (* M 48 )

\* Adapters with screws

## SOLID TAPPING HEADS

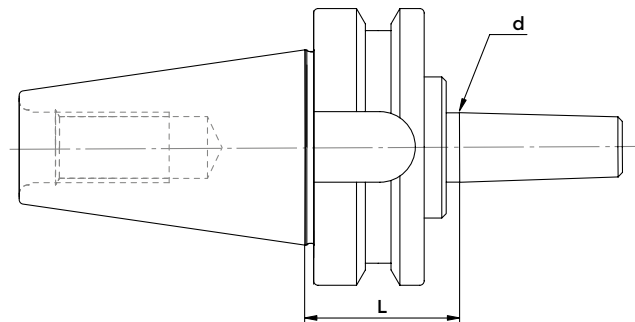


### JIS-B 6339 MAS 403/BT A

COD.	DESCRIPTION	ISO	D	d	L	TAP SIZE RANGE
M6010	BT 40 - B. 1 FISSO	40	19	33	67	M 3 ÷ M 12 (* M 18 )
M6020	BT 40 - B. 2 FISSO	40	31	50	90	M 6 ÷ M 20 (* M 30 )
5711	BT 40 - B. 3 FISSO	40	48	72	117	M 14 ÷ M 33 (* M 48 )

\* Adapters with screws

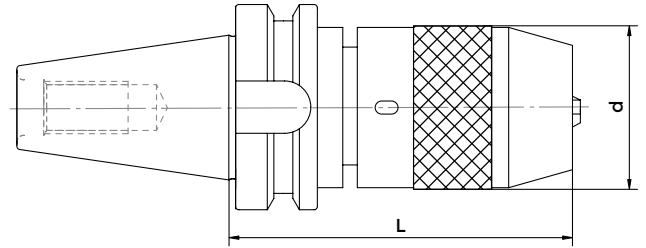
## DRILL CHUCKS ADAPTERS






### JIS-B 6339 MAS 403/BT AD - DIN 238

COD.	DESCRIPTION	ISO	L	d	G6.3 8000
3994	BT 30 - B 16	30	40	15,733	•
3865	BT 40 - B 12	40	40	12,065	•
216-31502	BT 40 - B 16	40	40	15,733	•
3995	BT 40 - B 18	40	40	17,78	•
3996	BT 50 - B 16	50	45	15,733	•
3997	BT 50 - B 18	50	45	17,78	•

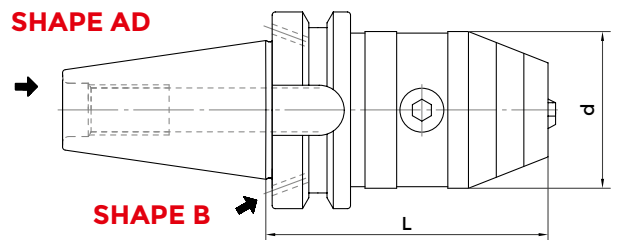
## DRILL CHUCKS - RIGHT SPIN




### JIS-B 6339 MAS 403/BT A

COD.	DESCRIPTION	ISO	DRILL RANGE	L	d	G6.3 8000	CLAMPS	SCREW	WRENCH
									
8593	BT 30 - DC 13	30	0,5 ÷ 13	90	50	•	832-012020	9021	816-111024
252-11501	BT 40 - DC 13	40	0,5 ÷ 13	90	50	•	832-012020	9021	816-111024
252-11502	BT 40 - DC 16	40	3 ÷ 16	120	57	•	832-012021	9023	816-111025
252-11503	BT 50 - DC 13	50	0,5 ÷ 13	110	50	•	832-012020	9021	816-111024
252-11504	BT 50 - DC 16	50	3 ÷ 16	110	57	•	832-012021	9023	816-111025

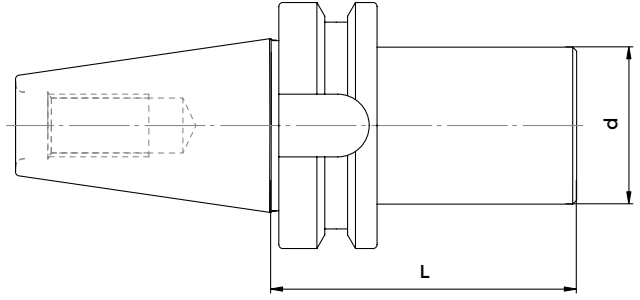
## DRILL CHUCKS LEFT AND RIGHT SPIN



### JIS-B 6339 MAS 403/BT A - MAS 403BT/ADB

COD. (AD)	COD. (AD+B)	DESCRIPTION	ISO	DRILL RANGE	L	d	G6.3 8000	SCREW
								
252-11400	-	BT 30 - DCU 13	30	0,5 ÷ 13	100	50	•	816-152001
252-11410	8599	BT 40 - DCU 13	40	0,5 ÷ 13	98	50	•	816-152001
252-11411	8600	BT 40 - DCU 16	40	3 ÷ 16	103	50	•	816-152001
252-11412	8601	BT 50 - DCU 13	50	0,5 ÷ 13	110	50	•	816-152001
252-11413	8602	BT 50 - DCU 16	50	3 ÷ 16	112	50	•	816-152001

**BLANK BARS**



**JIS-B 6339 MAS 403/BT A - AD**

COD.	DESCRIPTION	ISO	d	L
217-41502	BT 40 - D. 40 ST	40	40	160
4368	BT 40 - D. 50 ST	40	50	200
9490	BT 40 - D. 63 ST	40	63	160
217-41504	BT 40 - D. 63 ST	40	63	250
4372	BT 50 - D. 63 ST	50	63	250
217-41507	BT 50 - D. 80 ST	50	80	300