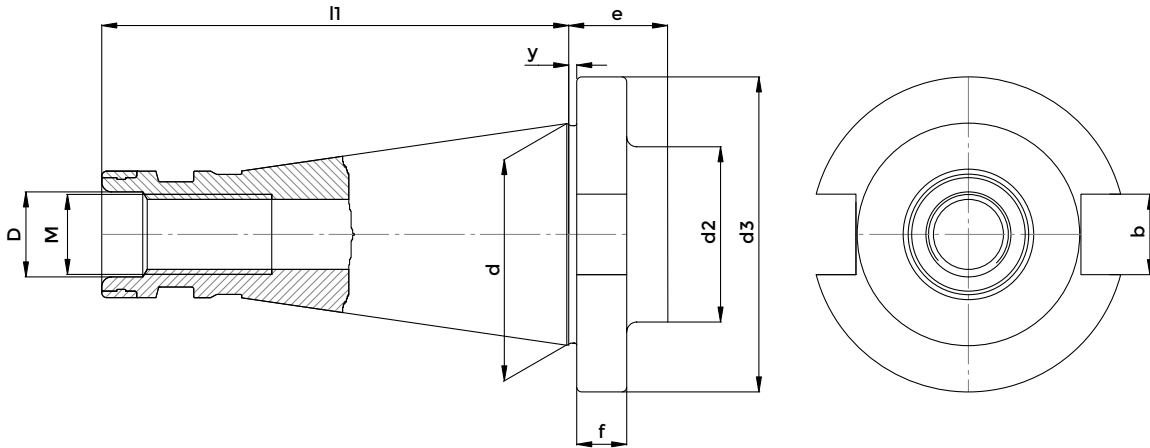


NT CHUCKS
DIN2080



TAPER SHANKS DATA SHEET



DIN2080

ISO	d	l1	D	M	y	d2	f	d3	e	b
30	31,75	68,4	13	M12	1,6	36	8	50	18,6	16,1
40	44,45	93,4	17	M16	1,6	50	10	63	22,6	16,1
50	69,85	126,8	26	M24	3,2	78	12	97,5	31,2	25,7

TECHNICAL FEATURES KINTEK ISO TOOLHOLDERS

All Kintek Toolholders are manufactured according to DIN norm.

COLLET CHUCK RUNOUT ACCURACY

The norm DIN6391 permits a runout error between external cone and internal cone / collet seat of 0.016. Our production has a runout accuracy which is guaranteed to be within 0,003 / 0,010 m at the tool seat.

- Hardness HRC 58+-2, Strength 800-1000 N/mm²
- Black oxidized
- Internal and external grinding finished.

CONE TOLERANCE ACCORDING TO THE CLASS AT3.

SHELL END MILL ADAPTOR RUNOUT ACCURACY

Our shell end mill adaptors meet the requirements of the norm DIN6358, which prescribes for diameters 16-22-27-32-40 a runout accuracy of: 0,01 for SK 30/40 0,015 for SK 50.

WELDON END MILL HOLDER RUNOUT ACCURACY

According to the norm DIN6359-1 Weldon end mill holders have to meet the following requirements:

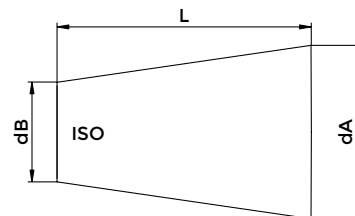
BORE: tolleranza H5

RUNOUT ACCURACY: < 0.01 (for SK 40)

Our end mill adaptors ensure the prescribed holes' tolerance and have a runout accuracy which is normally 0.005

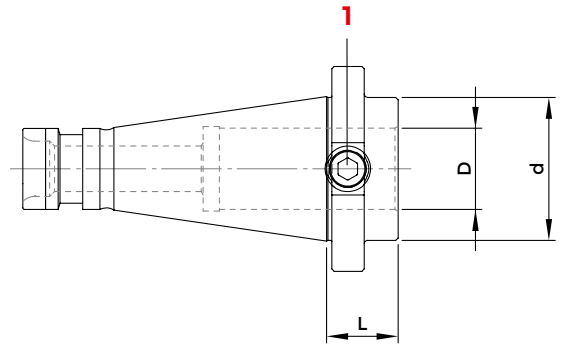
CONSTRUCTIVE FEATURES

- Manufactured with Casehardening Steel.
- Casehardened with depth 0,6 - 0,8 mm
- Hardened-Tempered



ISO	L	dA-dB	AT3
30	42	12.250	+0.002
40	59	17.208	+0.003
50	92	26.833	+0.004

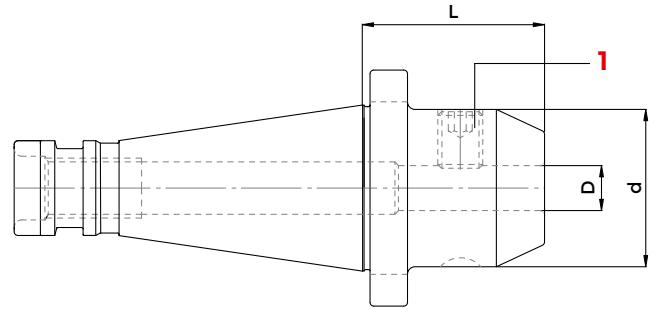
SHORT TYPE END MILL HOLDERS



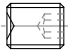
DIN 2080 - DIN 1835 B

COD.	DESCRIPTION	ISO	D	L	d	G6,3 8000	1
							STOP SCREW
3090	ISO 40 - WE 16 / H 22	40	16	22	48	•	0068
3091	ISO 40 - WE 20 / H 22	40	20	22	48	•	811-106032
3092	ISO 40 - WE 25 / H 22	40	25	22	48	•	0073
3109	ISO 40 - WE 32 / H 40	40	32	40	44	•	0074
3093	ISO 50 - WE 16 / H 20	50	16	20	48	•	0400
3094	ISO 50 - WE 20 / H 20	50	20	20	48	•	811-106007
3095	ISO 50 - WE 25 / H 20	50	25	20	65	•	811-106042
3096	ISO 50 - WE 32 / H 35	50	32	35	72	•	811-106009

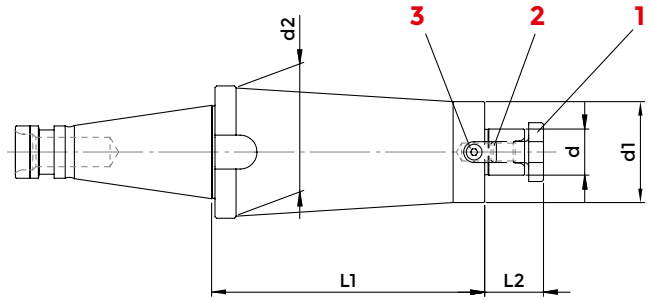
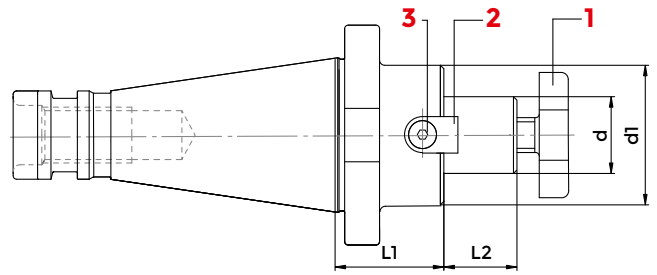
WELDON END MILL HOLDERS



DIN 2080 - DIN 1835 B

COD.	DESCRIPTION	ISO	D	L	d	G6,3 8000	1 STOP SCREW
							
4442	ISO 30 - WE 6 / H 40	30	6	40	25	•	811-106001
4443	ISO 30 - WE 8 / H 40	30	8	40	28	•	811-106002
4444	ISO 30 - WE 10 / H 40	30	10	40	35	•	811-106004
4445	ISO 30 - WE 12 / H 40	30	12	40	42	•	811-106005
4447	ISO 30 - WE 16 / H 50	30	16	50	48	•	811-106006
4449	ISO 30 - WE 20 / H 63	30	20	63	52	•	811-106007
4450	ISO 30 - WE 25 / H 75	30	25	75	65	•	811-106008
213-11102	ISO 40 - WE 6 / H 50	40	6	50	25	•	811-106001
213-11103	ISO 40 - WE 8 / H 50	40	8	50	28	•	811-106002
213-11104	ISO 40 - WE 10 / H 50	40	10	50	35	•	811-106004
213-11105	ISO 40 - WE 12 / H 50	40	12	50	42	•	811-106005
3610	ISO 40 - WE 14 / H 50	40	14	50	44	•	811-106005
213-11107	ISO 40 - WE 16 / H 63	40	16	63	48	•	811-106006
213-11109	ISO 40 - WE 20 / H 63	40	20	63	52	•	811-106007
213-11110	ISO 40 - WE 25 / H 90	40	25	90	64	•	811-106008
213-11111	ISO 40 - WE 32 / H 90	40	32	90	72	•	811-106009
3312	ISO 40 - WE 40 / H 90	40	40	90	80	•	811-106009
3655	ISO 50 - WE 6 / H 50	50	6	50	25	•	811-106001
3656	ISO 50 - WE 8 / H 50	50	8	50	28	•	811-106002
3657	ISO 50 - WE 10 / H 63	50	10	63	35	•	811-106004
213-11115	ISO 50 - WE 12 / H 63	50	12	63	42	•	811-106005
213-11117	ISO 50 - WE 16 / H 63	50	16	63	48	•	811-106006
213-11119	ISO 50 - WE 20 / H 63	50	20	63	52	•	811-106007
213-11120	ISO 50 - WE 25 / H 80	50	25	80	64	•	811-106008
213-11121	ISO 50 - WE 32 / H 85	50	32	85	72	•	811-106009
213-11122	ISO 50 - WE 40 / H 95	50	40	95	78	•	811-106009

FACE MILL HOLDERS TENONS DRIVE



DIN 2080 - ISO 3937

COD.	DESCRIPTION	ISO	d	L1	L2	d1	d2	G6,3 8000	1	2	3	WRENCH
									CROSS SCREW	TENON	SCREW	
5498	ISO 30 - D.13 FISSO / H 35	30	13	35	12	28	-	•				-
4200	ISO 30 - D.16 FISSO / H 35	30	16	35	17	38	-	•				816-130002
4201	ISO 30 - D.22 FISSO / H 35	30	22	35	19	48	-	•				816-130003
4202	ISO 30 - D.27 FISSO / H 35	30	27	35	21	58	-	•				816-130004
216-71105	ISO 40 - D.16 FISSO / H 45	40	16	45	17	38	-	•				816-130002
9800	ISO 40 - D.16 FISSO / H 100	40	16	100	17	38	-	•				816-130002
5501	ISO 40 - D.16 FISSO / H 130	40	16	130	17	38	-	•				816-130002
216-71106	ISO 40 - D.22 FISSO / H 45	40	22	45	19	48	-	•				816-130003
9801	ISO 40 - D.22 FISSO / H 100	40	22	100	19	48	-	•				816-130003
5503	ISO 40 - D.22 FISSO / H 130	40	22	130	19	48	61	•				816-130003
216-71107	ISO 40 - D.27 FISSO / H 45	40	27	45	21	58	-	•				816-130004
9802	ISO 40 - D.27 FISSO / H 100	40	27	100	21	58	-	•				816-130004
5505	ISO 40 - D.27 FISSO / H 130	40	27	130	21	58	-	•				816-130004
216-71108	ISO 40 - D.32 FISSO / H 50	40	32	50	24	78	-	•				816-130005
9803	ISO 40 - D.32 FISSO / H 100	40	32	100	24	66	-	•				816-130005
5507	ISO 40 - D.32 FISSO / H 130	40	32	130	24	66	-	•				816-130005
216-71109	ISO 40 - D.40 FISSO / H 55	40	40	55	27	88	-	•				816-130006
216-71115	ISO 50 - D.16 FISSO / H 45	50	16	45	17	38	-	•				816-130002
9805	ISO 50 - D.16 FISSO / H 100	50	16	100	17	38	-	•				816-130002
5510	ISO 50 - D.16 FISSO / H 160	50	16	160	17	38	-	•				816-130002
216-71116	ISO 50 - D.22 FISSO / H 45	50	22	45	19	48	-	•				816-130003
9806	ISO 50 - D.22 FISSO / H 100	50	22	100	19	48	-	•				816-130003
5512	ISO 50 - D.22 FISSO / H 160	50	22	160	19	48	-	•				816-130003
216-71117	ISO 50 - D.27 FISSO / H 45	50	27	45	21	58	-	•				816-130004
9807	ISO 50 - D.27 FISSO / H 100	50	27	100	21	58	-	•				816-130004
216-71147	ISO 50 - D.27 FISSO / H 160	50	27	160	21	58	-	•				816-130004
216-71118	ISO 50 - D.32 FISSO / H 50	50	32	50	24	78	-	•				816-130005
9808	ISO 50 - D.32 FISSO / H 100	50	32	100	24	66	-	•				816-130005
5516	ISO 50 - D.32 FISSO / H 160	50	32	160	24	66	-	•				816-130005
216-71119	ISO 50 - D.40 FISSO / H 50	50	40	50	40	88	-	•				816-130006
9809	ISO 50 - D.40 FISSO / H 100	50	40	100	40	88	-	•				816-130006
5518	ISO 50 - D.40 FISSO / H 160	50	40	160	40	88	-	•				816-130006

ACCESSORIES

p. 674



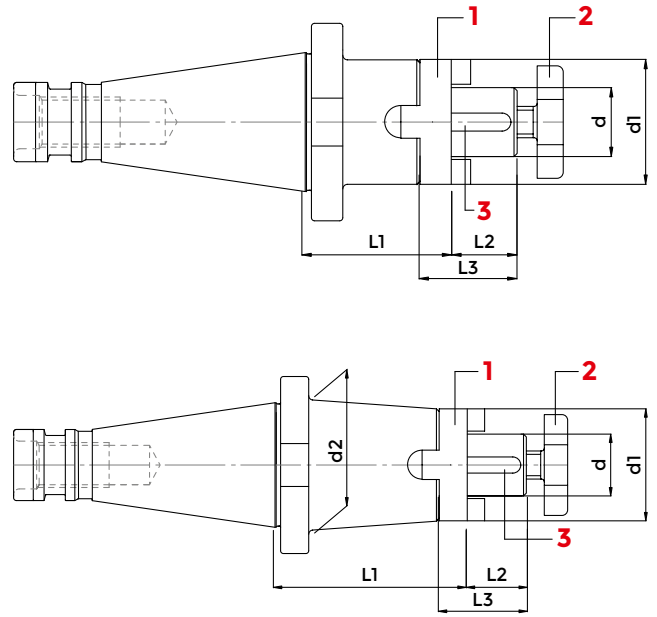
p. 676



p. 675



COMBI-SHELL MILL HOLDERS



DIN 2080 - DIN 6358

COD.	DESCRIPTION	ISO	d	L1	L2	L3	d1	d2	G6,3 8000	1	2	3	WRENCH
										COUPLING RING	CROSS SCREW	KEY	
3878	ISO 30 - D.16 COMBI / H 35	30	16	35	17	27	32	-	•				816-130002
3879	ISO 30 - D.22 COMBI / H 35	30	22	35	19	31	40	-	•				816-130003
3880	ISO 30 - D.27 COMBI / H 35	30	27	35	21	33	48	-	•				816-130004
3881	ISO 30 - D.32 COMBI / H 50	30	32	50	24	38	58	-	•				816-130005
216-11101	ISO 40 - D.16 COMBI / H 52	40	16	52	17	27	32	-	•				816-130002
216-11120	ISO 40 - D.16 COMBI / H 100	40	16	100	17	27	32	40	•				816-130002
216-11102	ISO 40 - D.22 COMBI / H 52	40	22	52	19	31	40	-	•				816-130003
216-11121	ISO 40 - D.22 COMBI / H 100	40	22	100	19	31	40	44	•				816-130003
216-11103	ISO 40 - D.27 COMBI / H 52	40	27	52	21	33	48	-	•				816-130004
216-11122	ISO 40 - D.27 COMBI / H 100	40	27	100	21	33	48	-	•				816-130004
216-11104	ISO 40 - D.32 COMBI / H 52	40	32	52	24	38	58	-	•				816-130005
4192	ISO 40 - D.32 COMBI / H 100	40	32	100	24	38	58	-	•				816-130005
216-11105	ISO 40 - D.40 COMBI / H 52	40	40	52	27	41	70	-	•				816-130006
3822	ISO 50 - D.16 COMBI / H 55	50	16	55	17	27	32	-	•				816-130002
216-11125	ISO 50 - D.16 COMBI / H 100	50	16	100	17	27	32	50	•				816-130002
216-11107	ISO 50 - D.22 COMBI / H 55	50	22	55	19	31	40	-	•				816-130003
216-11126	ISO 50 - D.22 COMBI / H 100	50	22	100	19	31	40	60	•				816-130003
216-11108	ISO 50 - D.27 COMBI / H 55	50	27	55	21	33	48	-	•				816-130004
216-11127	ISO 50 - D.27 COMBI / H 100	50	27	100	21	33	48	60	•				816-130004
3825	ISO 50 - D.32 COMBI / H 55	50	32	55	24	38	58	-	•				816-130005
216-11128	ISO 50 - D.32 COMBI / H 100	50	32	100	24	38	58	-	•				816-130005
3826	ISO 50 - D.40 COMBI / H 55	50	40	55	27	41	70	-	•				816-130006
216-11129	ISO 50 - D.40 COMBI / H 100	50	40	100	27	41	70	-	•				816-130006

ACCESSORIES

p. 675



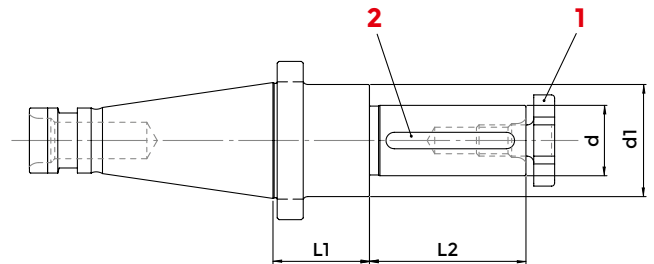
p. 674



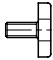
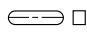
p. 675



MILL HOLDERS WITH FEATHER KEY



DIN 2080 - DIN 6360

COD.	DESCRIPTION	ISO	d	L1	L2	d1	G6,3 8000	1	2	WRENCH
								CROSS SCREW	KEY	
0134	ISO 30 - D.16 CHT	30	16	35	30	28	•			
0135	ISO 30 - D.22 CHT	30	22	35	40	36	•	811-107003	0147	816-130002
0136	ISO 30 - D.27 CHT	30	27	35	60	43	•	811-107004	0148	816-130003
4205	ISO 40 - D.16 CHT	40	16	37	30	28	•	811-107005	0149	816-130004
4207	ISO 40 - D.22 CHT	40	22	37	40	36	•	811-107003	0147	816-130002
4209	ISO 40 - D.27 CHT	40	27	37	60	43	•	811-107004	0148	816-130003
4211	ISO 40 - D.32 CHT	40	32	37	60	48	•	811-107005	0149	816-130004
4222	ISO 50 - D.40 CHT	50	40	40	60	58	•	811-107006	0150	816-130005
								811-107007	0151	816-130006

ACCESSORIES

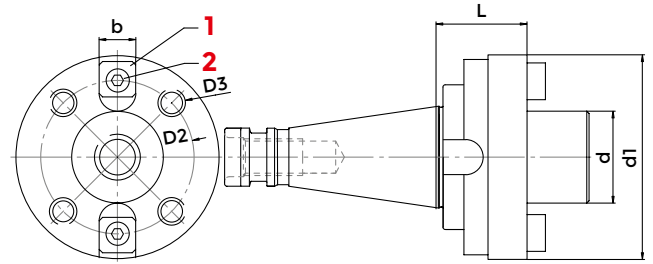
p. 674



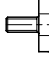


p. 675



FACE MILL HOLDER FOR FACE MILLING CUTTERS



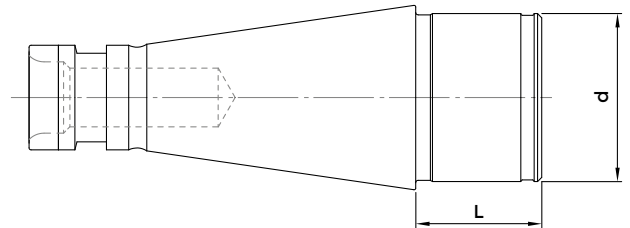
DIN 2080 - DIN 6357

COD.	DESCRIPTION	ISO	d	L	d1	D2	D3	b	G6,3 8000	1	2	TENON
										CROSS SCREW	SCREW	
4223	ISO 40 - D. 40 FM	40	40	20	89	66,7	M 12	15,9	•			
4225	ISO 40 - D. 60 FM	40	60	30	129	101,6	M 16	25,4	•	-	811-101064	814-202120
216-21102	ISO 50 - D. 40 FM	50	40	30	89	66,7	M 12	15,9	•	811-107007	0207	814-202080
216-21104	ISO 50 - D. 60 FM	50	60	30	129	101,6	M 16	25,4	•	-	811-101064	814-202120

ACCESSORIES



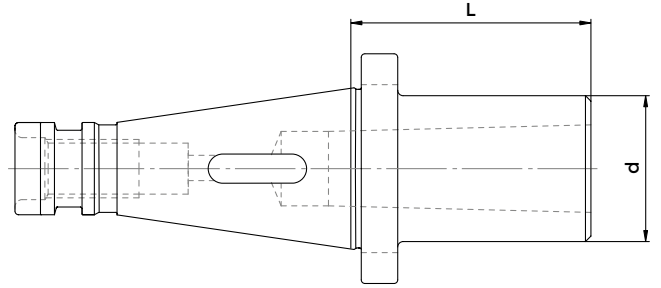
CENTERING DEVICE FOR INSERTS MILLING CUTTERS



DIN 2080

COD.	DESCRIPTION	ISO	d	L	G6,3 8000
4012	ISO 40 - D. 40 CF	40	40	29	•
4025	ISO 50 - D. 60 CF	50	60	39	•

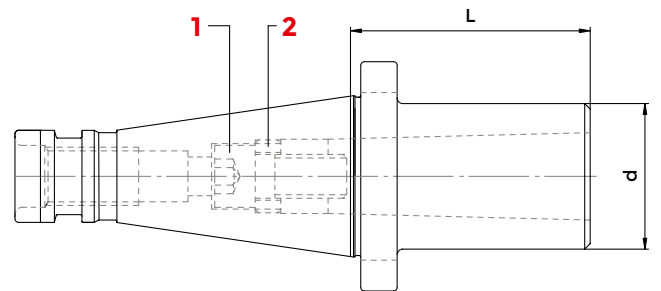
INDEXABLE MORSE TAPER DRILL HOLDERS



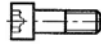


DIN 2080

COD.	DESCRIPTION	ISO	MORSE	d	L	G6,3 8000
8517	ISO 30 - CM 1 PUNTE	30	1	25	60	•
3873	ISO 30 - CM 2 PUNTE	30	2	32	60	•
3874	ISO 30 - CM 3 PUNTE	30	3	40	70	•
8518	ISO 40 - CM 1 PUNTE	40	1	25	50	•
212-41102	ISO 40 - CM 2 PUNTE	40	2	32	50	•
212-41103	ISO 40 - CM 3 PUNTE	40	3	40	65	•
212-41104	ISO 40 - CM 4 PUNTE	40	4	48	95	•
8523	ISO 50 - CM 1 PUNTE	50	1	25	45	•
212-41105	ISO 50 - CM 2 PUNTE	50	2	32	60	•
212-41106	ISO 50 - CM 3 PUNTE	50	3	40	65	•
212-41107	ISO 50 - CM 4 PUNTE	50	4	48	70	•
212-41108	ISO 50 - CM 5 PUNTE	50	5	63	100	•

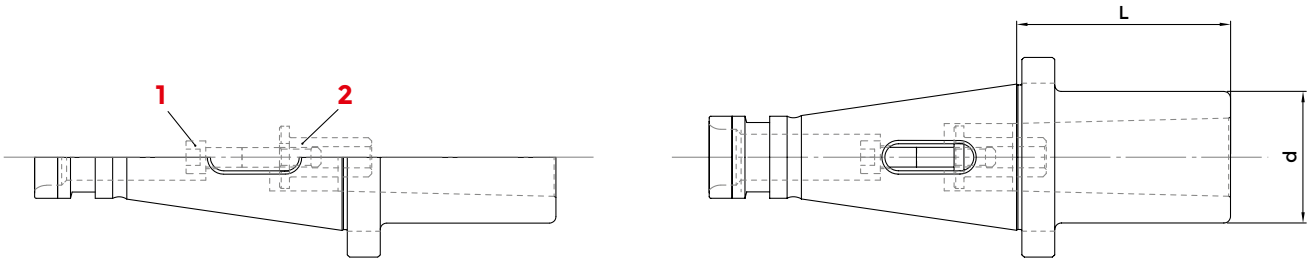
END MILL HOLDERS FOR MORSE TAPER CUTTERS




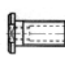
DIN 2080

COD.	DESCRIPTION	ISO	MORSE	d	L	G6,3 8000	1	2	WRENCH
							SCREW	LEFT NUT	
3876	ISO 30 - CM 2 FRESE	30	2	32	60	•			
3877	ISO 30 - CM 3 FRESE	30	3	40	80	•	811-111007	811-302031	816-20205002
212-21102	ISO 40 - CM 2 FRESE	40	2	32	50	•	7402	811-302032	816-20206002
212-21103	ISO 40 - CM 3 FRESE	40	3	40	65	•	811-111007	811-302031	816-20205002
212-21104	ISO 40 - CM 4 FRESE	40	4	48	95	•	7403	811-302032	816-20206002
3626	ISO 50 - CM 2 FRESE	50	2	32	60	•	7404	811-302036	816-20207002
212-21106	ISO 50 - CM 3 FRESE	50	3	40	65	•	811-111007	811-302031	816-20205002
212-21107	ISO 50 - CM 4 FRESE	50	4	48	65	•	7403	811-302032	816-20206002
212-21108	ISO 50 - CM 5 FRESE	50	5	63	120	•	7407	811-302036	816-20207002
							7408	811-302034	816-20208002

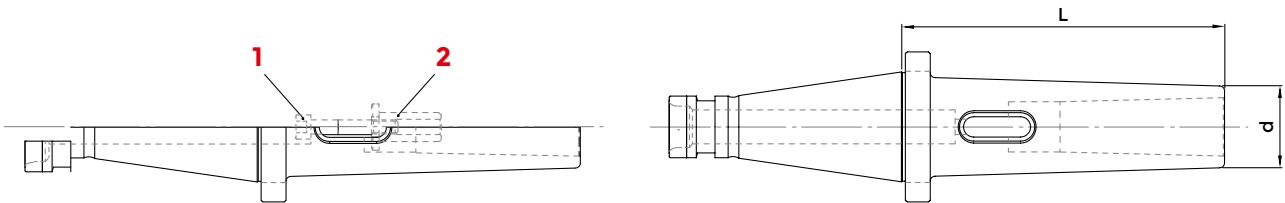
COMBI MORSE TAPER HOLDERS FOR DRILLS AND MILLING CUTTERS




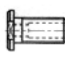
DIN 2080

COD.	DESCRIPTION	ISO	MORSE	d	L	G6,3 8000	1	2
							SCREW	REDUCER
3612	ISO 40 - CM 1 P + F	40	1	25	50	•		
3613	ISO 40 - CM 2 P + F	40	2	32	50	•	7401	-
8532	ISO 40 - CM 3 P + F	40	3	40	65	•	7400	811-302006
3616	ISO 50 - CM 1 P + F	50	1	25	45	•	7400	-
3617	ISO 50 - CM 2 P + F	50	2	32	60	•	7405	-
3618	ISO 50 - CM 3 P + F	50	3	40	65	•	811-101070	-
8533	ISO 50 - CM 4 P + F	50	4	48	70	•	7409	-

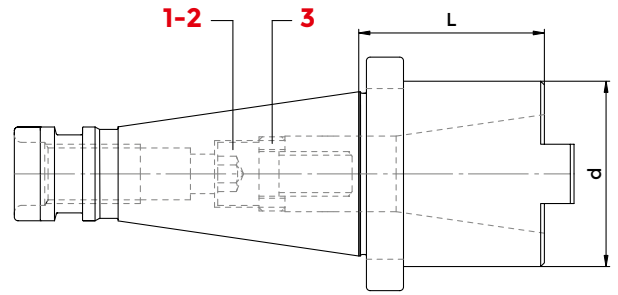
COMBI MORSE TAPER HOLDERS FOR DRILLS AND MILLING CUTTERS - LONG TYPE



DIN 2080

COD. DRILLS	COD. DRILLS + MILLING CUTTERS	DESCRIPTION	ISO	MORSE	d	L	G6,3 8000	1	2
								SCREW	REDUCER
8521	3545	ISO 40 - CM 2	40	2	25	110	•		
8522	3546	ISO 40 - CM 3	40	3	33	130	•	7401	-
3548	-	ISO 40 - CM 4	40	4	40	150	•	7400	811-302006
8528	212-61119	ISO 50 - CM 3	50	3	33	150	•	-	-
8529	3788	ISO 50 - CM 4	50	4	40	180	•	811-101079	-
8530	-	ISO 50 - CM 5	50	5	55	220	•	0042	-
								-	-

ADAPTER FROM NT TO NT/SK/BT

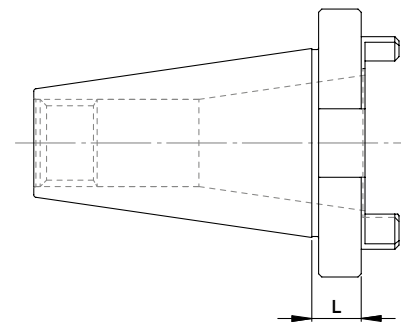


DIN 2080 - DIN 6357

COD.	DESCRIPTION	ISO	ISO	d	L	G6,3 8000	1	2	3	WRENCH
							SCREW DIN 2080	SCREW BT DIN 69871	NUT	
4235	ISO 40 - ISO 30 / TC 30 / BT 30	40	30	50	50	•				816-20206002
212-11101	ISO 50 - ISO 40 / TC 40 / BT 40	50	40	68	63	•				816-20207002

* included in the supply

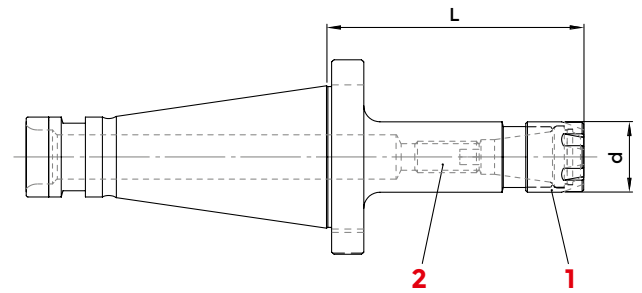
ADAPTER/REDUCERS FROM NT TO NT



DIN 2080

COD.	DESCRIPTION	ISO	ISO	L	G6,3 8000
8828	ISO 40 - IP 30	40	30	12	•
8829	ISO 50 - IP 40	50	40	16	•

ER COLLET CHUCK WITH MINI NUT



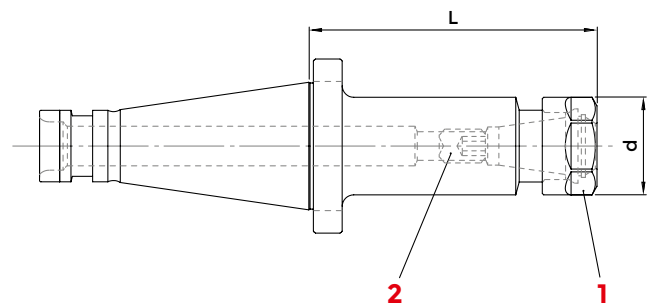
DIN 2080

COD.	DESCRIPTION	ISO	ER	d	L	G6,3 8000	1	2	WRENCH	COLLET
							NUT	SCREW		
2957	ISO 30 - ER16 GM	30	ER 16 1÷12	22	70	•				
2959	ISO 40 - ER16 GM	40	ER 16 1÷12	22	80	•	1229	811-102030	816-203009	ER16
2960	ISO 40 - ER20 GM	40	ER 20 1÷15	28	90	•	1229	811-102038	816-203009	ER16
							1230	811-106005	816-203010	ER20

ACCESSORIES



ER COLLET CHUCK WITH HEXAGONAL NUT



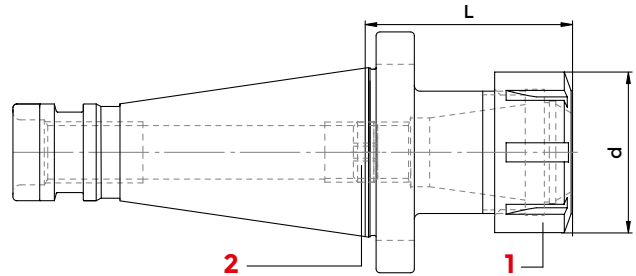
DIN 2080

COD.	DESCRIPTION	ISO	ER	d	L	G6,3 8000	1	2	WRENCH	COLLET
							NUT	SCREW		
8333	ISO 30 - ER 20 GE / H 50	30	ER 20 1÷15	34	50	•				
8334	ISO 40 - ER 16 GE / H 50	40	ER 16 1÷12	28	50	•	812-203010	811-102030	816-203013	ER20
8335	ISO 40 - ER 16 GE / H100	40	ER 16 1÷12	28	100	•	812-203009	811-102038	816-203012	ER16
8336	ISO 40 - ER 20 GE / H 50	40	ER 20 1÷15	34	50	•	812-203009	811-102038	816-203012	ER16
8337	ISO 40 - ER 20 GE / H100	40	ER 20 1÷15	34	100	•	812-203010	811-106005	816-203013	ER20
							812-203010	811-106005	816-203013	ER20

ACCESSORIES



ER COLLET CHUCKS



DIN 2080 - DIN 6499 / ISO 15488

COD.	DESCRIPTION	ISO	ER	d	L	G6,3 8000	1 2			
							NUT	SCREW	WRENCH	COLLET
214-31105	ISO 30 - ER 16 / H 50	30	ER 16 1÷12	32	50	•				
2945	ISO 30 - ER 20 / H 50	30	ER 20 1÷15	35	50	•	812-203005	811-102030	816-203000	ER16
214-31106	ISO 30 - ER 25 / H 40	30	ER 25 1÷20	42	40	•	812-203006	811-102030	816-203005	ER20
2946	ISO 30 - ER 25 / H 75	30	ER 25 1÷20	42	75	•	812-203001	0190	816-203001	ER25
214-31107	ISO 30 - ER 32 / H 50	30	ER 32 2÷25	50	50	•	812-203001	0190	816-203001	ER25
3986	ISO 30 - ER 32 / H 70	30	ER 32 2÷25	50	70	•	812-203002	811-303118	816-203002	ER32
ISO30H100ER32	ISO 30 - ER 32 / H 100	30	ER 32 2÷25	50	100	•	812-203002	811-303118	816-203002	ER32
3543	ISO 30 - ER 40 / H 75	30	ER 40 3÷32	63	75	•	812-203002	811-303118	816-203002	ER32
3990	ISO 30 - ER 40 / H 100	30	ER 40 3÷32	63	100	•	812-203003	811-303118	816-203003	ER40
214-31152	ISO 40 - ER 16 / H 50	40	ER 16 1÷12	32	50	•	812-203003	811-303118	816-203003	ER40
3941	ISO 40 - ER 16 / H 100	40	ER 16 1÷12	32	100	•	812-203005	811-102038	816-203000	ER16
2950	ISO 40 - ER 20 / H 50	40	ER 20 1÷15	35	50	•	812-203005	811-102038	816-203000	ER16
2796	ISO 40 - ER 20 / H 100	40	ER 20 1÷15	35	100	•	812-203006	811-106005	816-203005	ER20
214-31101	ISO 40 - ER 25 / H 50	40	ER 25 1÷20	42	50	•	812-203006	811-106005	816-203005	ER20
214-31108	ISO 40 - ER 25 / H 100	40	ER 25 1÷20	42	100	•	812-203001	0190	816-203001	ER25
2929	ISO 40 - ER 32 / H 50	40	ER 32 2÷25	50	50	•	812-203001	0190	816-203001	ER25
214-31102	ISO 40 - ER 32 / H 70	40	ER 32 2÷25	50	70	•	812-203002	811-303118	816-203002	ER32
214-31109	ISO 40 - ER 32 / H 100	40	ER 32 2÷25	50	100	•	812-203002	811-303118	816-203002	ER32
2827	ISO 40 - ER 32 / H 130	40	ER 32 2÷25	50	130	•	812-203002	811-303118	816-203002	ER32
2952	ISO 40 - ER 32 / H 160	40	ER 32 2÷25	50	160	•	812-203002	811-303118	816-203002	ER32
2930	ISO 40 - ER 40 / H 50	40	ER 40 3÷32	63	50	•	812-203002	811-303118	816-203002	ER32
214-31114	ISO 40 - ER 40 / H 70	40	ER 40 3÷32	63	70	•	812-203003	0195	816-203003	ER40
2992	ISO 40 - ER 40 / H 100	40	ER 40 3÷32	63	100	•	812-203003	0195	816-203003	ER40
2953	ISO 40 - ER 50 / H 100	40	ER 50 6÷36	78	100	•	812-203003	0195	816-203003	ER40
214-31137	ISO 50 - ER 25 / H 65	50	ER 25 1÷20	42	65	•	812-203007	0195	816-203004	ER50
2831	ISO 50 - ER 25 / H 100	50	ER 25 1÷20	42	100	•	812-203001	0190	816-203001	ER25
2885	ISO 50 - ER 25 / H 140	50	ER 25 1÷20	42	140	•	812-203001	0190	816-203001	ER25
214-31103	ISO 50 - ER 32 / H 70	50	ER 32 2÷25	50	70	•	812-203001	0190	816-203001	ER25
2955	ISO 50 - ER 32 / H 100	50	ER 32 2÷25	50	100	•	812-203002	811-303118	816-203002	ER32
214-31110	ISO 50 - ER 32 / H 140	50	ER 32 2÷25	50	140	•	812-203002	811-303118	816-203002	ER32
214-31104	ISO 50 - ER 40 / H 75	50	ER 40 3÷32	63	75	•	812-203002	811-303118	816-203002	ER32
2458	ISO 50 - ER 40 / H 100	50	ER 40 3÷32	63	100	•	812-203003	0195	816-203003	ER40
214-31111	ISO 50 - ER 40 / H 140	50	ER 40 3÷32	63	140	•	812-203003	0195	816-203003	ER40
2932	ISO 50 - ER 50 / H 70	50	ER 50 6÷36	78	70	•	812-203003	0195	816-203003	ER40

ACCESSORIES

p. 633



p. 615







p. 636







EQUIPMENT CASE WITH REDUCED SET OF ER COLLETS, COLLET CHUCK AND WRENCH



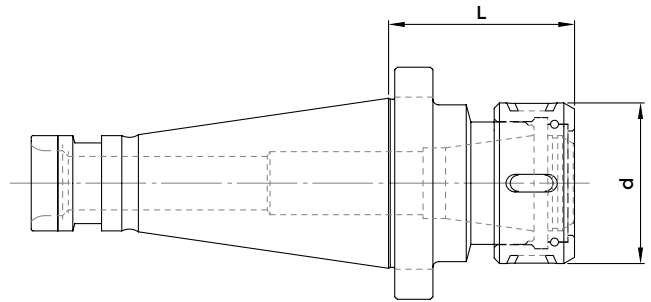
COD.	DESCRIPTION	ISO	CHUCK	CASE	WRENCH	COLLET
						
7516	KIT Rid ISO 30/ H 40 - ER 25	30	214-31106	7022	816-203001	ER25: Ø 4 - 6 - 8 -10 -12 -16
7517	KIT Rid ISO 30/ H 50 - ER 32	30	214-31107	7023	816-203002	ER32: Ø 4 - 6 - 8 -10 -12 -16 - 20
7518	KIT Rid ISO 40/ H 50 - ER 25	40	214-31101	7022	816-203001	ER25: Ø 4 - 6 - 8 -10 -12 -16
7519	KIT Rid ISO 40/ H 50 - ER 32	40	2929	7023	816-203002	ER32: Ø 4 - 6 - 8 -10 -12 -16 - 20
7520	KIT Rid ISO 40/ H 70 - ER 32	40	214-31102	7023	816-203002	ER32: Ø 4 - 6 - 8 -10 -12 -16 - 20
7521	KIT Rid ISO 40/ H 50 - ER 40	40	2930	7024	816-203003	ER40: Ø 4 - 6 - 8 -10 -12 -16 - 20 -25
7522	KIT Rid ISO 50/ H 70 - ER 32	50	214-31103	7023	816-203002	ER32: Ø 4 - 6 - 8 -10 -12 -16 - 20
7523	KIT Rid ISO 50/ H 75 - ER 40	50	214-31104	7024	816-203003	ER40: Ø 4 - 6 - 8 -10 -12 -16 - 20 -25

EQUIPMENT CASE WITH COMPLETE SET OF ER COLLETS, AD SHAPE COLLET CHUCK AND WRENCH



COD.	DESCRIPTION	ISO	CHUCK	CASE	WRENCH	COLLET
						
7500	KIT ISO 30/ H 40 - ER25	30	214-31106	7022	3669	ER25: Ø 4 - 6 - 8 -10 -12 -16
7501	KIT ISO 30/ H 50 - ER32	30	214-31107	7023	816-203002	ER32: Ø 4 - 6 - 8 -10 -12 -16 - 20
7502	KIT ISO 40/ H 50 - ER25	40	214-31101	7022	816-203001	ER25: Ø 4 - 6 - 8 -10 -12 -16
7503	KIT ISO 40/ H 50 - ER32	40	2929	7023	816-203002	ER32: Ø 4 - 6 - 8 -10 -12 -16 - 20
7504	KIT ISO 40/ H 70 - ER32	40	214-31102	7023	816-203002	ER32: Ø 4 - 6 - 8 -10 -12 -16 - 20
7505	KIT ISO 40/ H 50 - ER40	40	2930	7024	816-203003	ER40: Ø 4 - 6 - 8 -10 -12 -16 - 20 -25
7506	KIT ISO 50/ H 70 - ER32	50	214-31103	7023	816-203002	ER32: Ø 4 - 6 - 8 -10 -12 -16 - 20
7507	KIT ISO 50/ H 75 - ER40	50	214-31104	7024	816-203003	ER40: Ø 4 - 6 - 8 -10 -12 -16 - 20 -25

DIN 6388 COLLET CHUCKS



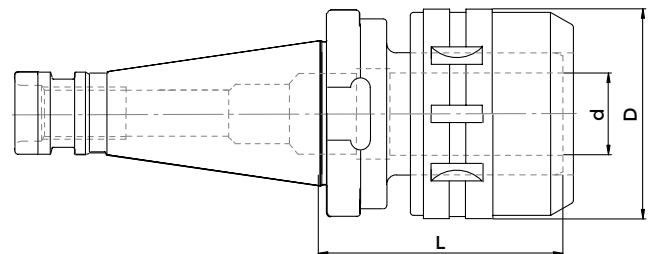
DIN 2080 - DIN 6388

COD.	DESCRIPTION	ISO	EOC	d	L	G6,3 8000	NUT	WRENCH	COLLET
3966	ISO 40 - EOC 25	40	EOC 25 2÷25	60	70	•			
3967	ISO 40 - EOC 32	40	EOC 32 3÷32	72	85	•	GOC32	816-203036	EOC32
3969	ISO 50 - EOC 32	50	EOC 32 3÷32	72	85	•	GOC32	816-203036	EOC32

ACCESSORIES



MILLING CHUCKS

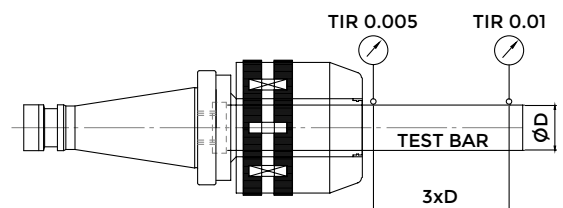


DIN 2080

COD.	DESCRIPTION	ISO	D	d	L	G6,3 8000	WRENCH	COLLET
214-01104	ISO 40 - PC 20	40	20	50	65	•		
214-01101	ISO 40 - PC 32	40	32	72	80	•	816-203036	OGX32
214-01102	ISO 50 - PC 32	50	32	72	85	•	816-203036	OGX32

Supplied with wrench

MILLING CHUCK Ø	SPECIFICATION DIN 7178-1	TOLERANCE	RUN-OUT (3D)	CLAMPING TORQUE
C20	AT3	TC40 (0~+0,003)	0~0,01	980M.m (100 Kgf.m)
C32	AT3	TC50 (0~+0,004)	0~0,01	3430M.m (350 Kgf.m)






ACCESSORIES

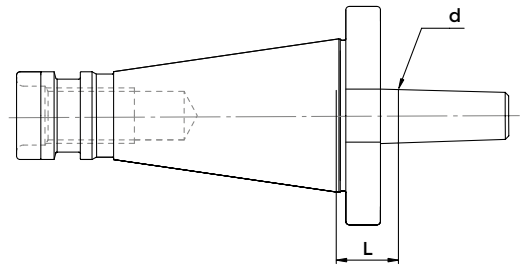


MILLING KIT WITH CHUCK, WRENCH AND COLLETS



COD.	DESCRIPTION	ISO	G6,3 8000	CHUCK	CASE	WRENCH	COLLET
7449	KIT ISO 40 - PC 20 / H 65	40	•				OGX20: Ø 6 - 8 - 10 - 12 - 16
KITISO40C32	KIT ISO 40 - PC 32 / H 80	40	•	214-01104	3695	816-203036	OGX32: Ø 6 - 8 - 10 - 12 - 16 - 20 - 25
KITISO50C32	KIT ISO 50 - PC 32 / H 85	50	•	214-01102	3695	816-203036	OGX32: Ø 6 - 8 - 10 - 12 - 16 - 20 - 25

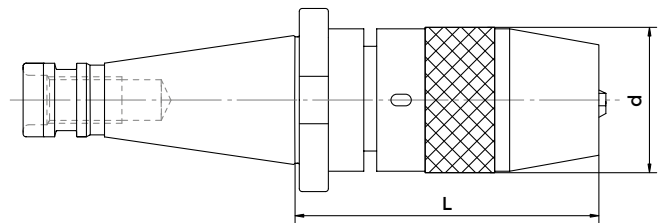
DRILL CHUCKS ADAPTERS






DIN 2080

COD.	DESCRIPTION	ISO	d	L	G6,3 8000
3991	ISO 30 - B 16	30	15,733	15	•
3859	ISO 40 - B 12	40	12,065	17	•
216-31102	ISO 40 - B 16	40	15,733	17	•
216-31103	ISO 40 - B 18	40	17,78	17	•
216-31104	ISO 50 - B 16	50	15,733	20	•
216-31105	ISO 50 - B 18	50	17,78	20	•

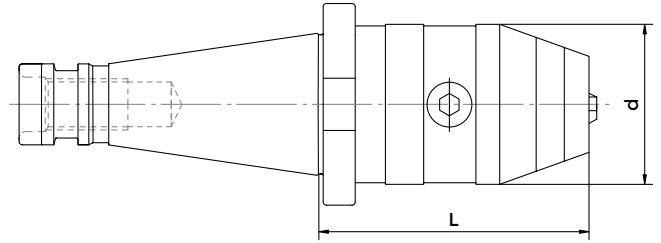
DRILL CHUCKS - RIGHT SPIN




DIN 2080

COD.	DESCRIPTION	ISO	DRILL RANGE	L	d	G6,3 8000	CLAMPS	SCREW	WRENCH
8578	ISO 30 - DC 13	30	0,5 ÷ 13	90	50	•			
252-11101	ISO 40 - DC 13	40	0,5 ÷ 13	90	50	•	832-012020	9021	816-111024
252-11102	ISO 40 - DC 16	40	3 ÷ 16	105	57	•	832-012021	9023	816-111025
252-11103	ISO 50 - DC 13	50	0,5 ÷ 13	80	50	•	832-012020	9021	816-111024
252-11104	ISO 50 - DC 16	50	3 ÷ 16	100	57	•	832-012021	9023	816-111025

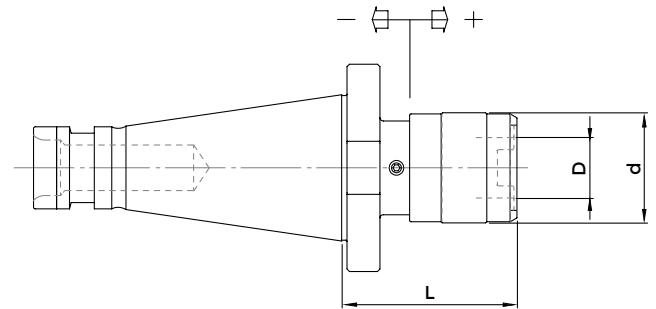
DRILL CHUCKS - LEFT AND RIGHT SPIN



DIN 2080

COD.	DESCRIPTION	ISO	DRILL RANGE	L	d	G6,3 8000	WRENCH
252-11105	ISO 40 - DCU 13	40	0,5 ÷ 13	85	50	•	 816-152001
252-11106	ISO 40 - DCU 16	40	3 ÷ 16	90	57	•	
8581	ISO 50 - DCU 13	50	0,5 ÷ 13	87	50	•	816-152001
8582	ISO 50 - DCU 16	50	3 ÷ 16	92	57	•	816-152001

TENSION/COMPRESSION TAPPING HEADS

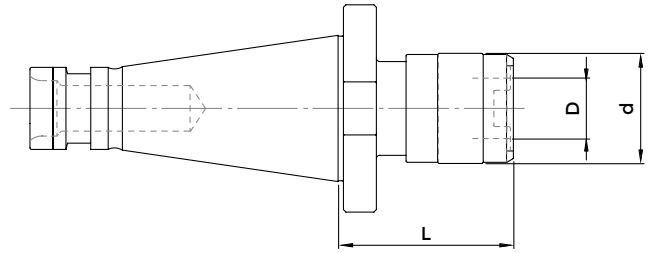


DIN 2080

COD.	DESCRIPTION	ISO	D	d	L	G6.3 8000	RANGE	TAP SIZE RANGE
3536	ISO 30 - B.1	30	19	38	52	•	- 7,5 + 7,5	M 3 ÷ M 12 (M 18)
M1020	ISO 40 - B.1	40	19	38	53	•	- 7,5 + 7,5	M 3 ÷ M 12 (M 18)
M1120	ISO 40 - B.2	40	31	55	77	•	- 15 + 15	M 6 ÷ M 20 (M 30)
4199	ISO 50 - B.1	50	19	38	57	•	- 9 + 9	M 3 ÷ M 12 (M 18)
M1130	ISO 50 - B.2	50	31	55	79	•	- 15 + 15	M 6 ÷ M 20 (M 30)
3542	ISO 50 - B.3	50	48	79	125	•	- 20 + 20	M 14 ÷ M 33 (M 48)

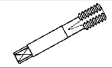
* Adapters with screws

SOLID TAPPING HEADS

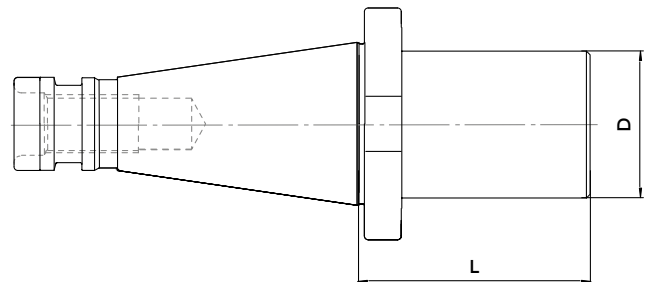


DIN 2080

COD.	DESCRIPTION	ISO	D	d	L	G6,3 8000	TAP SIZE RANGE
4941	ISO 30 - B. 1 FISSO	30	19	33	50	•	M 3 ÷ M 12 (* M 18)
4942	ISO 30 - B. 2 FISSO	30	31	50	73	•	M 6 ÷ M 20 (* M 30)
4943	ISO 40 - B. 1 FISSO	40	19	33	52	•	M 3 ÷ M 12 (* M 18)
4944	ISO 40 - B. 2 FISSO	40	31	50	74	•	M 6 ÷ M 20 (* M 30)



BLANK BARS



DIN 2080

COD.	DESCRIPTION	ISO	d	L	G6,3 8000
217-41101	ISO 40 - D. 40 ST / H 160	40	40	160	•
4378	ISO 40 - D. 63 ST / H 160	40	63	160	•
4379	ISO 40 - D. 63 ST / H 250	40	63	250	•
217-41106	ISO 50 - D. 80 ST / H 300	50	80	300	•